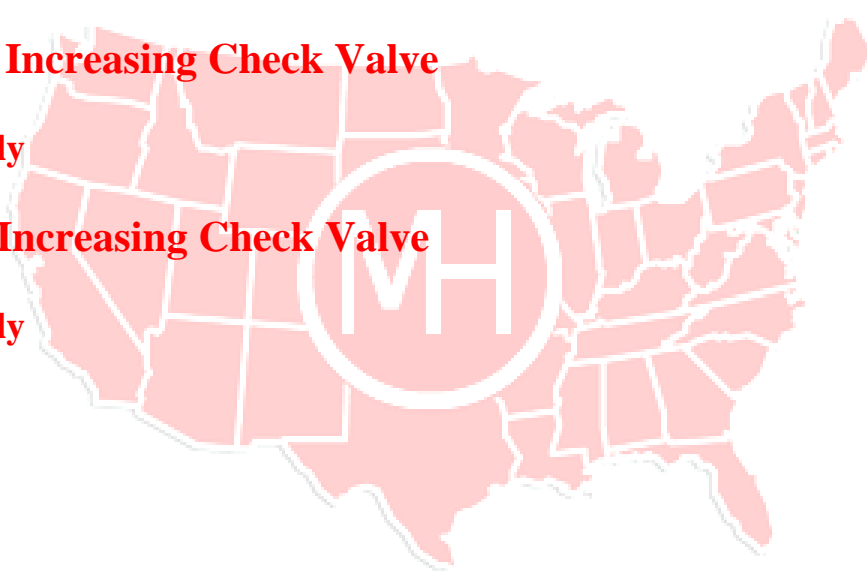


# M&H Valve Increasing Check Valves

<u>Section</u>	<u>Page</u>
<b>Increasing Check Valves</b>	<b>2-7</b>
<b>Specifications &amp; Style Numbers</b>	<b>2</b>
<b>Plain Increasing Check Valve</b>	<b>3, 4</b>
<b>Dimensions</b>	<b>3</b>
<b>Disc Assembly</b>	<b>4</b>
<b>Lever &amp; Weight Increasing Check Valve</b>	<b>5, 6</b>
<b>Dimensions</b>	<b>5</b>
<b>Disc Assembly</b>	<b>6</b>
<b>Lever &amp; Spring Increasing Check Valve</b>	<b>7, 8</b>
<b>Dimensions</b>	<b>7</b>
<b>Disc Assembly</b>	<b>8</b>



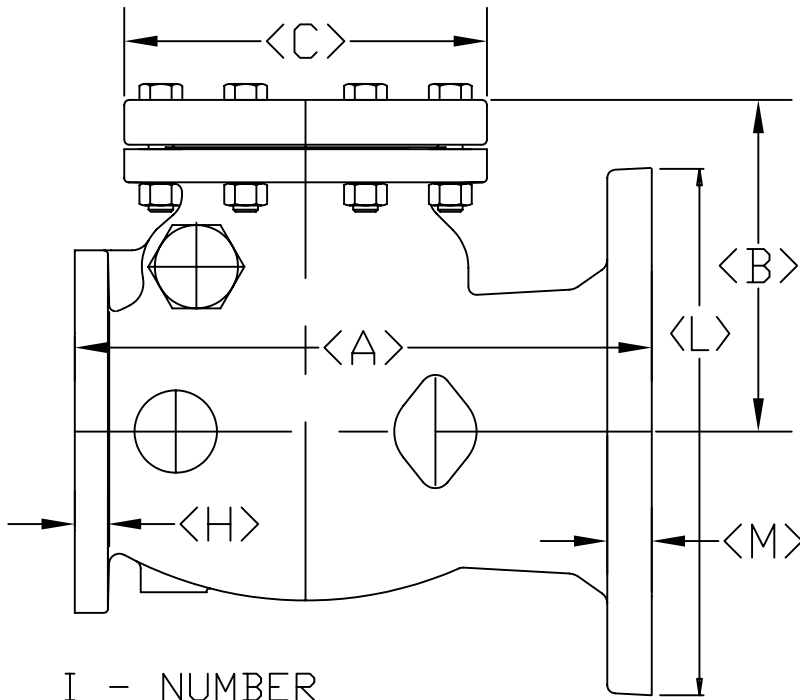
SPECIFICATIONS STYLE NUMBERS (4" x 6" to 10" x 12")

**M&H AWWA C508 INCREASING FLANGED CHECK VALVES**

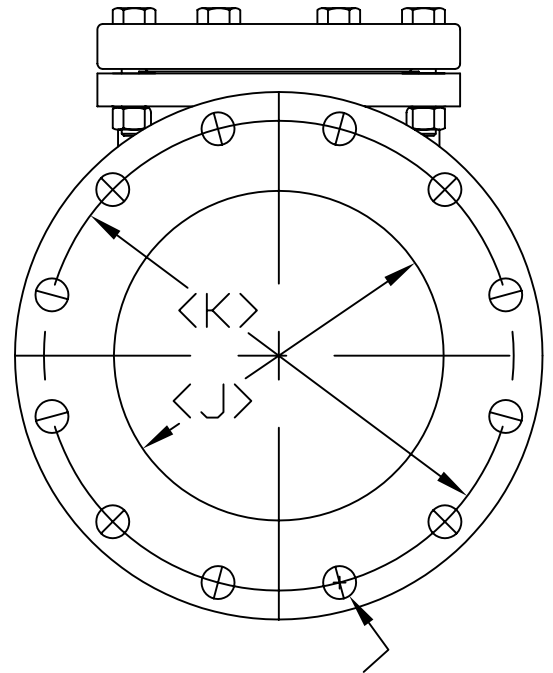
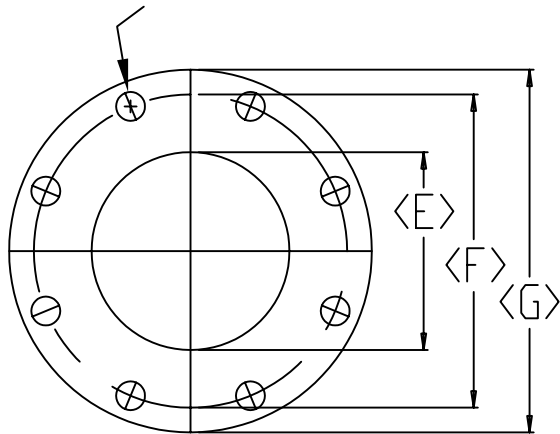
Size Range	Water Working Pressure psi	Seat Test Psi	Hydrostatic Shell Test psi
4" x 6 to 10" x 12"	200	400	400

<b>Type / Facing Material / Options</b>	<b>Size Range</b>	<b>Style Number</b>	<b>Drawing Number</b>
<b>INCREASING CHECK</b>			
Plain / Swing Check—Rubber Faced	4" x 6" to 10"x12"	3059-02A	ICV-A1-PC
Plain / Swing Check—Bronze Faced	4" x 6" to 10"x12"	3059-02	ICV-A1-PC
Lever & Weight—Rubber Faced	4" x 6" to 10"x12"	3159-02A	ICV-A1-LW
Lever & Weight—Bronze Faced	4" x 6" to 10"x12"	3159-02	ICV-A1-LW
Lever & Spring—Rubber Faced	4" x 6" to 10"x12"	3259-02A	ICV-A1-LS
Lever & Spring—Bronze Faced	4" x 6" to 10"x12"	3259-02	ICV-A1-LS

NOTE: In addition to Dual Arms, Limit Switches & Tapped Cover, M&H also can provide check valves with special coatings and tapped bosses. See drawing CV-TB in the "Standard Flanged Check Valve Section" for location and sizes of tapped bosses.



I - NUMBER  
& SIZE OF BOLTS



N - NUMBER  
& SIZE OF BOLTS

SIZE	A	B	C	E	F	G	H	I	J	K	L	M	N	WEIGHT
4x6	13.50	8.31	9	4	7.50	9	0.94	8-0.63	6	9.50	11	1	8-0.75	124
4x8	15	8.31	9	4	7.50	9	0.94	8-0.63	8	11.75	13.50	1.13	8-0.75	143
6x8	17	10.06	11	6	9.50	11	1	8-0.75	8	11.75	13.50	1.13	8-0.75	205
6x10	17.50	10.06	11	6	9.50	11	1	8-0.75	10	14.25	16	1.19	12-0.88	215
8x10	20	12.38	13.50	8	11.75	13.50	1.13	8-0.75	10	14.25	16	1.19	12-0.88	375
8x12	21	12.38	13.50	8	11.75	13.50	1.13	8-0.75	12	17	19	1.25	12-0.88	396
10x12	22.50	13.93	16.75	10	14.25	16	1.19	12-0.88	12	17	19	1.25	12-0.88	586

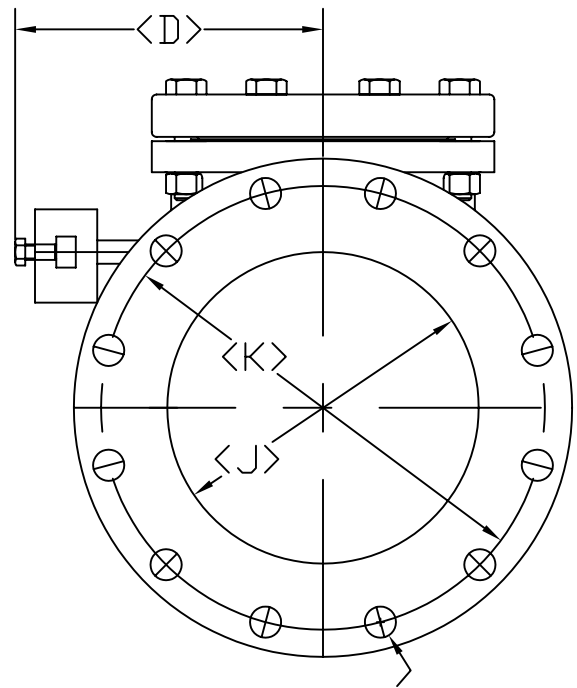
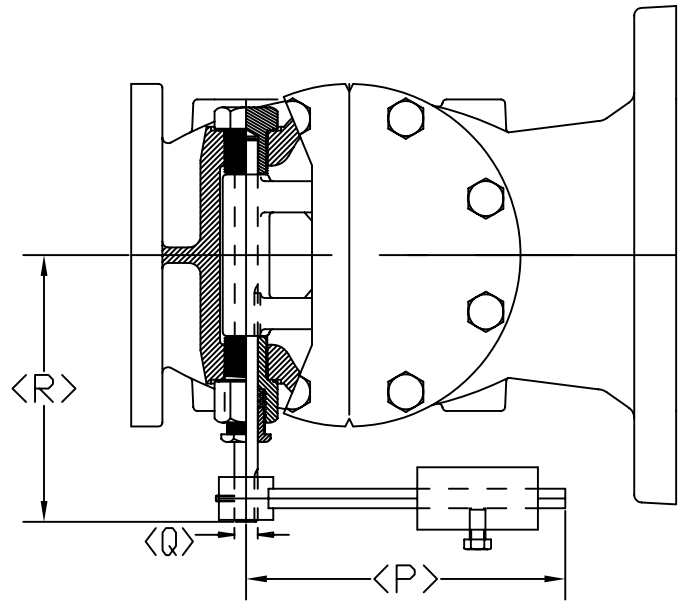
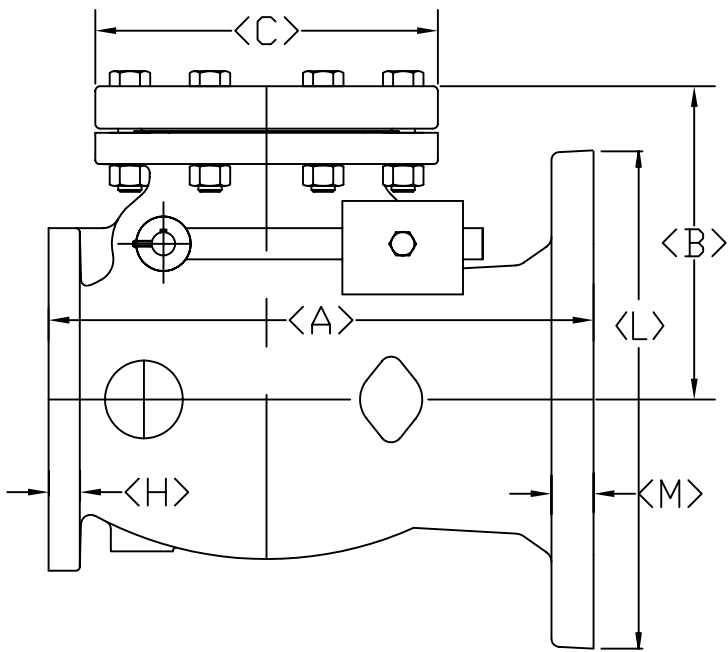
STYLE-3059-02A 2"-12" WITH RUBBER FACED CLAPPER  
 STYLE-3059-02 2"-12" WITH BRONZE FACED CLAPPER

M&H VALVE COMPANY  
 ANNISTON, ALABAMA  
 A DIVISION OF MCWANE INC.

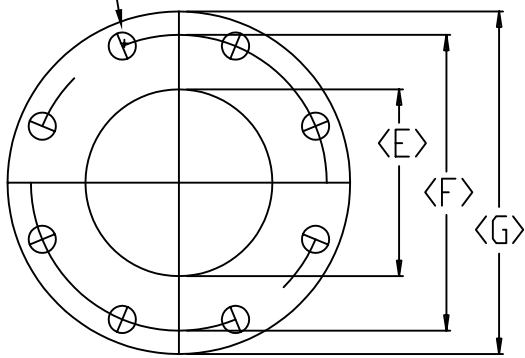
DWN: TRIJ  
 DATE: 7/1/05  
 DWG. NO.  
 ICV-A1-PC

4" x 6" to 10" x 12"  
 STYLE 3059-02  
 INCREASING CHECK VALVE  
 PLAIN / STANDARD SWING CHECK  
 (PAGE 1 of 2) DIMENSIONS





I - NUMBER & SIZE OF BOLTS



N - NUMBER & SIZE OF BOLTS

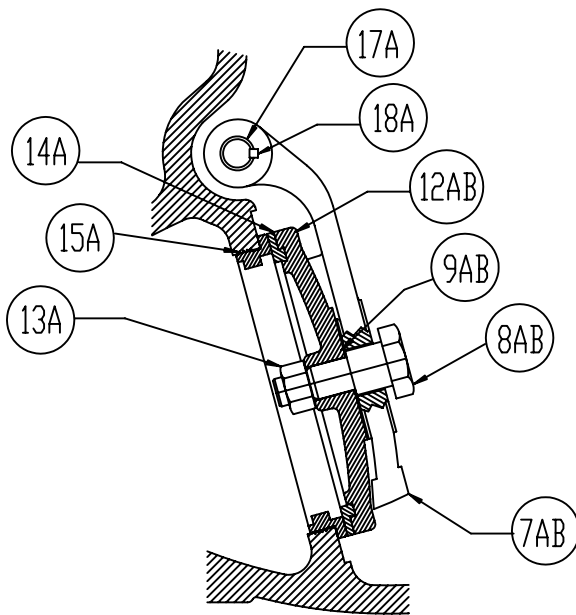
SIZE	A	B	C	D	E	F	G	H APPROX.	I	J	K	L	M	N	P	Q	R	WEIGHT
4x6	13.50	8.31	9	10.1	4	7.50	9	0.94	8-0.63	6	9.50	11	1	8-0.75	8.25	0.63	8.19	132
4x8	15	8.31	9	10.1	4	7.50	9	0.94	8-0.63	8	11.75	13.50	1.13	8-0.75	8.25	0.63	8.19	151
6x8	17	10.06	11	10.9	6	9.50	11	1	8-0.75	8	11.75	13.50	1.13	8-0.75	10.25	0.75	9.00	215
6x10	17.50	10.06	11	10.9	6	9.50	11	1	8-0.75	10	14.25	16	1.19	12-0.88	10.25	0.75	9.00	226
8x10	20	12.38	13.50	12.4	8	11.75	13.50	1.13	8-0.75	10	14.25	16	1.19	12-0.88	14.5	0.88	10.19	385
8x12	21	12.38	13.50	12.4	8	11.75	13.50	1.13	8-0.75	12	17	19	1.25	12-0.88	14.5	0.88	10.19	407
10x12	22.50	13.93	16.75	14.7	10	14.25	16	1.19	12-0.88	12	17	19	1.25	12-0.88	18	1.00	11.63	600

STYLE 3159-02A 2"-12" WITH RUBBER FACED CLAPPER  
 STYLE 3159-02 2"-12" WITH BRONZE FACED CLAPPER

M&H VALVE COMPANY  
 ANNISTON, ALABAMA  
 A DIVISION OF MCWANE INC.

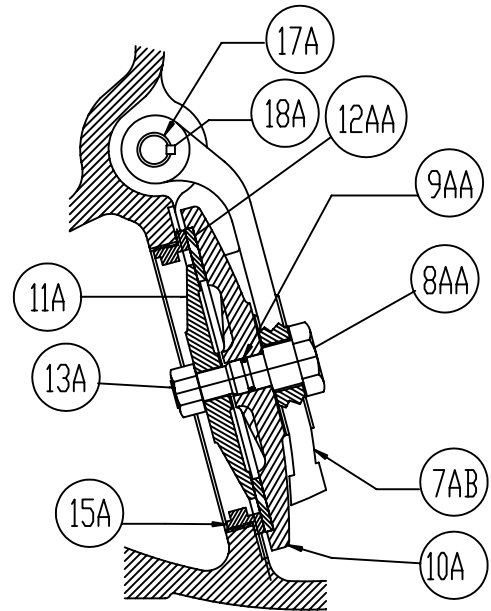
DWN: TRIJ  
 DATE: 7/1/05  
 DWG. NO.  
 ICV-A1-LW

4" x 6" to 10" x 12"  
 STYLE 3159-02  
 INCREASING CHECK VALVE  
 LEVER & WEIGHT  
 (PAGE 1 of 2) DIMENSIONS



4" X 6" to 10" x 12"  
LEVER & WEIGHT BRONZE SEATED DISC ASSEMBLY

7AB	1	HINGE W/KEYWAY	DUCTILE IRON A-536
8AB	1	DISC BOLT	(4'-8') STEEL---(10'-12') BRONZE
9AB	2	DISC BOLT WASHER (4'-8')	
12AB	1	DISC	CAST IRON A-126 CLASS B
13A	1	DISC NUT	RUST PROOF STEEL
14A	1	DISC RING	BRONZE
15A	1	SEAT RING	BRONZE
17A	1	EXTENDED HINGE PIN	STAINLESS STEEL A-276 (304)
18A	2	KEY	STAINLESS STEEL A-276 (304)



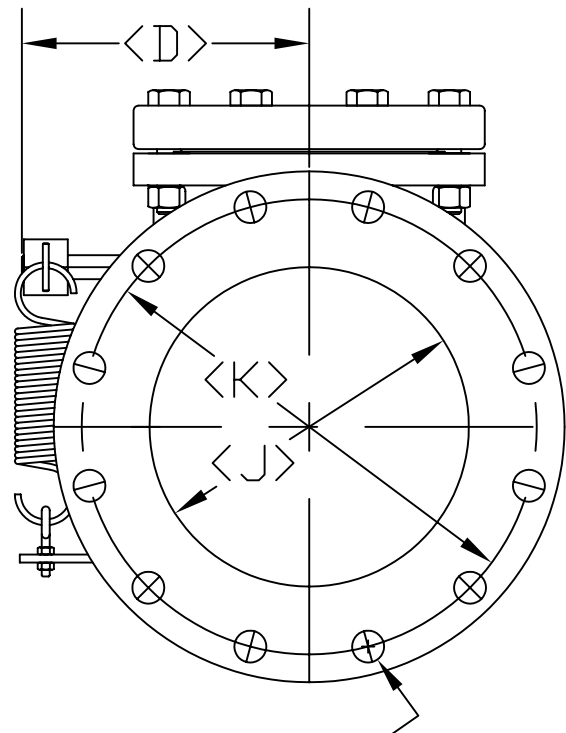
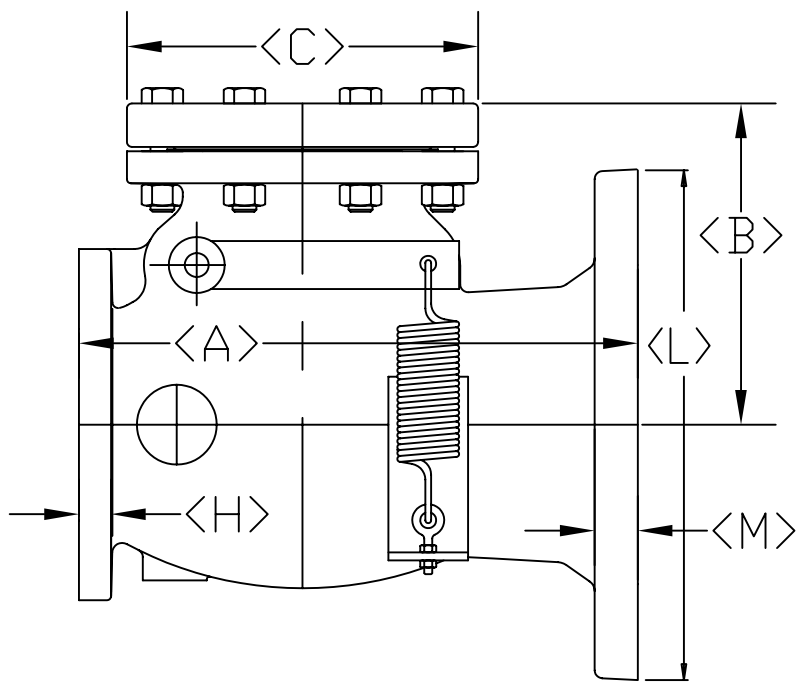
4" X 6" to 10" x 12"  
LEVER & WEIGHT RESILIENT SEATED DISC ASSEMBLY

7AB	1	HINGE W/KEYWAY	DUCTILE IRON A-536
8AA	1	DISC BOLT	(4'-8') STEEL---(10'-12') BRONZE
9AA	1	DISC BOLT O-RING (10',12')	SYNTHETIC RUBBER
10A	1	DISC HOLDER	CAST IRON A-126 CLASS B
11A	1	DISC PLATE	BRONZE
12AA	1	DISC	SYNTHETIC RUBBER
13A	1	DISC NUT	RUST PROOF STEEL
15A	1	SEAT RING	BRONZE
17A	1	EXTENDED HINGE PIN	STAINLESS STEEL A-276 (304)
18A	2	KEY	STAINLESS STEEL A-276 (304)

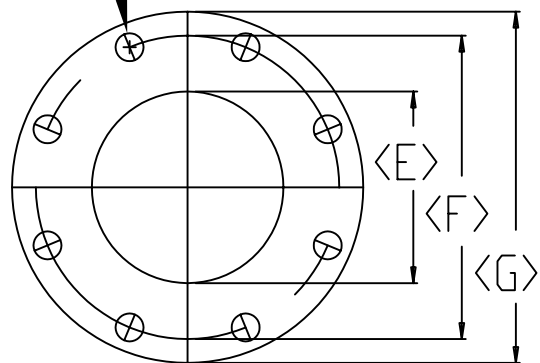
M&H VALVE COMPANY  
ANNISTON, ALABAMA  
A DIVISION OF MCWANE INC.

DWN: TRIJ  
DATE: 7/1/05  
DWG. NO.  
ICV-A2-LW

4" x 6" to 10" x 12"  
STYLE 3159-02  
INCREASING CHECK VALVE  
LEVER & WEIGHT  
(PAGE 2 of 2)



I - NUMBER & SIZE OF BOLTS



N - NUMBER & SIZE OF BOLTS

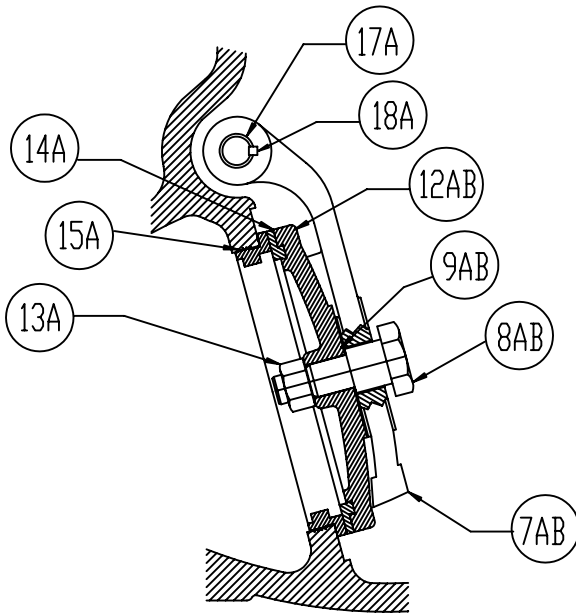
SIZE	A	B	C	D	E	F	G	H	I	J	K	L	M	N	WEIGHT
4x6	13.50	8.31	9	8.19	4	7.50	9	0.94	8-0.63	6	9.50	11	1	8-0.75	131
4x8	15	8.31	9	8.19	4	7.50	9	0.94	8-0.63	8	11.75	13.50	1.13	8-0.75	150
6x8	17	10.06	11	9	6	9.50	11	1	8-0.75	8	11.75	13.50	1.13	8-0.75	209
6x10	17.50	10.06	11	9	6	9.50	11	1	8-0.75	10	14.25	16	1.19	12-0.88	223
8x10	20	12.38	13.50	10.19	8	11.75	13.50	1.13	8-0.75	10	14.25	16	1.19	12-0.88	375
8x12	21	12.38	13.50	10.19	8	11.75	13.50	1.13	8-0.75	12	17	19	1.25	12-0.88	396
10x12	22.50	13.93	16.75	11.63	10	14.25	16	1.19	12-0.88	12	17	19	1.25	12-0.88	586

STYLE-3259-02A 2"-12" WITH RUBBER FACED CLAPPER  
 STYLE-3259-02 2"-12" WITH BRONZE FACED CLAPPER

M&H VALVE COMPANY  
 ANNISTON, ALABAMA  
 A DIVISION OF MCWANE INC.

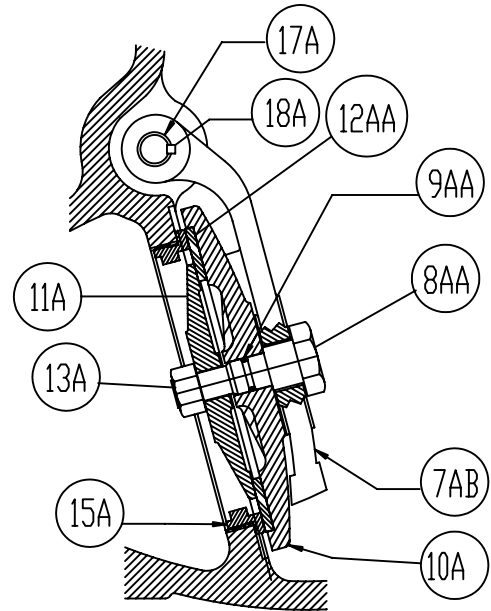
DWN: TRIJ  
 DATE: 7/1/05  
 DWG. NO.  
 ICV-A1-LS

4" x 6" to 10" x 12"  
 STYLE 3259-02  
 INCREASING CHECK VALVE  
 LEVER & SPRING  
 (PAGE 1 of 2) DIMENSIONS



4" X 6" to 10" x 12"  
LEVER & SPRING BRONZE SEATED DISC ASSEMBLY

7AB	1	HINGE W/KEYWAY	DUCTILE IRON A-536
8AB	1	DISC BOLT	(4'-8') STEEL---(10'-12') BRONZE
9AB	2	DISC BOLT WASHER (4'-8')	
12AB	1	DISC	CAST IRON A-126 CLASS B
13A	1	DISC NUT	RUST PROOF STEEL
14A	1	DISC RING	BRONZE
15A	1	SEAT RING	BRONZE
17A	1	EXTENDED HINGE PIN	STAINLESS STEEL A-276 (304)
18A	2	KEY	STAINLESS STEEL A-276 (304)



4" X 6" to 10" x 12"  
LEVER & SPRING RESILIENT SEATED DISC ASSEMBLY

7AB	1	HINGE W/KEYWAY	DUCTILE IRON A-536
8AA	1	DISC BOLT	(4'-8') STEEL---(10'-12') BRONZE
9AA	1	DISC BOLT O-RING (10',12')	SYNTHETIC RUBBER
10A	1	DISC HOLDER	CAST IRON A-126 CLASS B
11A	1	DISC PLATE	BRONZE
12AA	1	DISC	SYNTHETIC RUBBER
13A	1	DISC NUT	RUST PROOF STEEL
15A	1	SEAT RING	BRONZE
17A	1	EXTENDED HINGE PIN	STAINLESS STEEL A-276 (304)
18A	2	KEY	STAINLESS STEEL A-276 (304)

M&H VALVE COMPANY  
ANNISTON, ALABAMA  
A DIVISION OF MCWANE INC.

DWN: TRIJ  
DATE: 7/1/05  
DWG. NO.  
CV-A2-LS

4" x 6" to 10" x 12"  
STYLE 3259-02  
INCREASING CHECK VALVE  
LEVER & SPRING  
(PAGE 2 of 2) DIMENSIONS