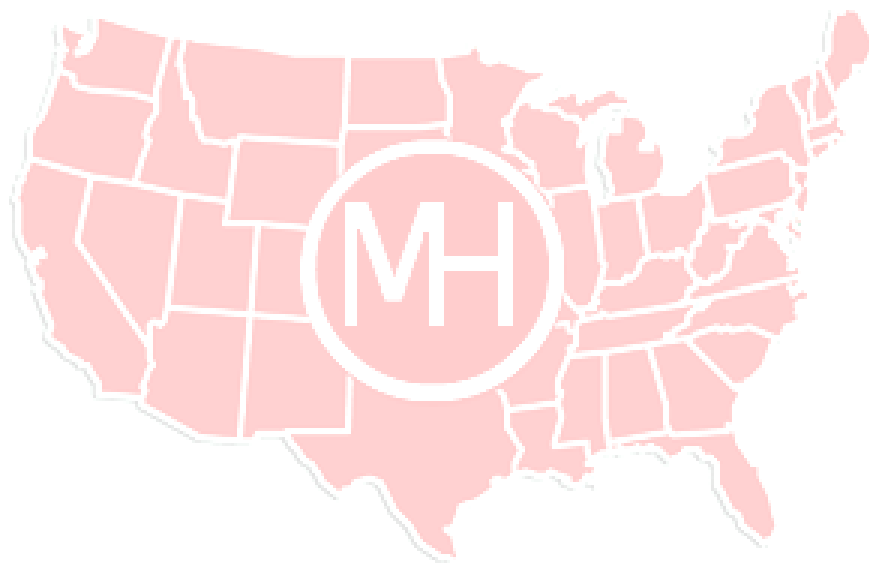


M&H Valve Ken Flex Check Valves

Section

Page

| | |
|--|------------|
| Ken Flex Check Valves | 2-4 |
| Specifications & Style Numbers | 2 |
| Dimensions & Disc Assembly | 3 |
| Dimensions & Disc Assembly (With Backflow Jack) | 4 |



M&H VALVE-RESILIENT HINGED CHECK VALVE KEN FLEX—STYLE 506 (4”-12”)

| Size Range | Seat Test psi | Hydrostatic Shell Test psi |
|------------|---------------|----------------------------|
| 4”-12” | 250 | 500 |

| <u>Available End Connections</u> | <u>Size Range</u> | <u>Style No.</u> |
|----------------------------------|-------------------|------------------|
| Flanged Ends | 4”-12” | 506 |

Note: 14” and Larger contact factory for availability and spec.

Accessories / Options:

Back flush device

Tapped mounting pad – Sampling Station (Note contact factory for availability and spec.)

Tapped mounting pad – Position Indicator (Note: contact factory for availability and spec.)

Stainless Steel Hardware

Features

All ductile iron construction.

Reversible reinforced resilient seat.

One moving part for long life.

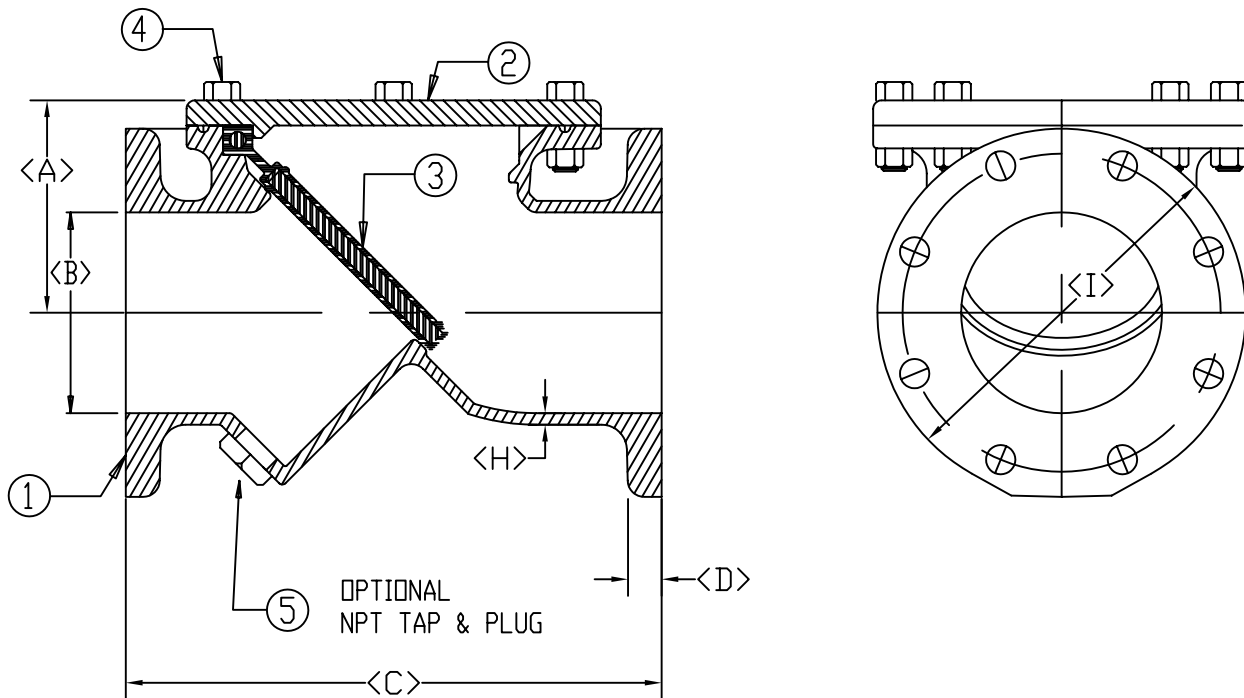
Fusion bonded epoxy for superior corrosion resistance.

ANSI-B-16.1 Flanges

250 PSI Working Pressure

500 PSI Shell Test

ASTM-A-536-65-45-12



| PART NO. | NO. REQ'D | PART | MATERIAL |
|----------|-----------|--------------------------|--------------------------------|
| 1 | 1 | BODY | DUCTILE IRON |
| 2 | 1 | COVER PLATE | DUCTILE IRON |
| 3 | 1 | FLAPPER | RESILIENT FLAPPER, MET. INSERT |
| 4 | Varies | COVER BOLTS AND NUTS | STEEL |
| 5 | 1 | NPT PLUG, STD ALL VALVES | STEEL |

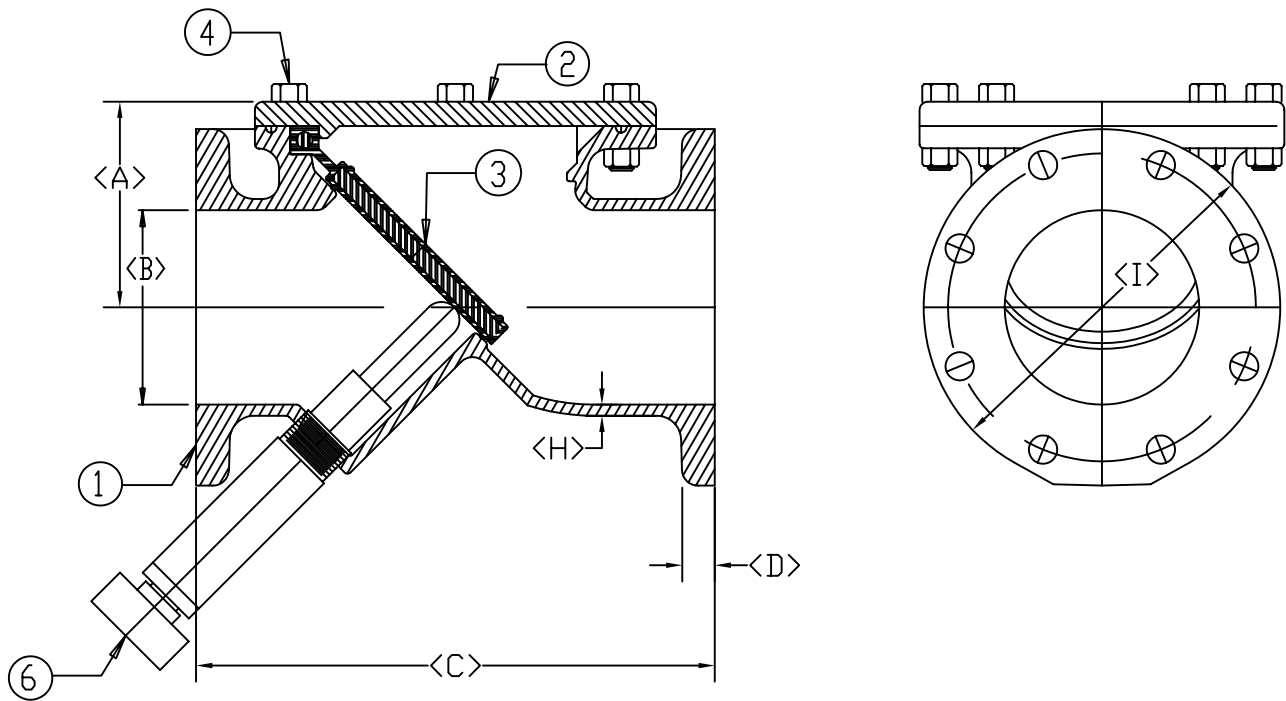
| SIZE | A (approx) | Ø B | C | D (nominal) | Ø E | F | Ø G | H (nom.) | I | WEIGHT |
|------|------------|-------|------|-------------|-------|----|------|----------|------|--------|
| 4 | 4.88 | 4.00 | 13 | 1.00 | 7.50 | 8 | 0.75 | 0.31 | 9.0 | 70 |
| 6 | 6.38 | 6.00 | 16 | 1.06 | 9.50 | 8 | 0.88 | 0.34 | 11.0 | 126 |
| 8 | 7.63 | 8.00 | 19.5 | 1.19 | 11.75 | 8 | 0.88 | 0.34 | 13.5 | 190 |
| 10 | 9.06 | 10.00 | 24.5 | 1.25 | 14.25 | 12 | 1.00 | 0.38 | 16.0 | 273 |
| 12 | 10.63 | 12.00 | 27.5 | 1.28 | 17.00 | 12 | 1.00 | 0.41 | 19.0 | 357 |

E - BOLT CIRCLE DIA. END FLANGE
 F - NUMBER OF BOLTS REQ'D EACH END FLANGE
 G - BOLT HOLE DIAMETER FOR END FLANGE
 END FLANGES CONFORM TO ANSI B16.1

M&H VALVE COMPANY
 ANNISTON, ALABAMA
 A DIVISION OF MCWANE INC.

DWN: TRIJ
 DATE: 7/1/05
 DWG. NO.
 K506-S

4" THRU 12"
 KENFLEX RESILIENT HINGED
 CHECK VALVE
 STYLE 506-S



| PART NO. | NO. REQ'D | PART | MATERIAL |
|----------|-----------|---------------------------|--------------------------------|
| 1 | 1 | BODY | DUCTILE IRON |
| 2 | 1 | COVER PLATE | DUCTILE IRON |
| 3 | 1 | FLAPPER | RESILIENT FLAPPER, MET. INSERT |
| 4 | Varies | COVER BOLTS AND NUTS | STEEL |
| 6 | 1 | BACKFLOW JACK SUBASSEMBLY | STEEL COMPONENTS |

| SIZE | A (approx) | Ø B | C | D (nom.) | Ø E | F | Ø G | H (nom.) | I | WEIGHT |
|------|------------|-------|------|----------|-------|----|------|----------|------|--------|
| 4 | 4.88 | 4.00 | 13 | 1.00 | 7.50 | 8 | 0.75 | 0.31 | 9.0 | 83 |
| 6 | 6.38 | 6.00 | 16 | 1.06 | 9.50 | 8 | 0.88 | 0.34 | 11.0 | 139 |
| 8 | 7.63 | 8.00 | 19.5 | 1.19 | 11.75 | 8 | 0.88 | 0.34 | 13.5 | 203 |
| 10 | 9.06 | 10.00 | 24.5 | 1.25 | 14.25 | 12 | 1.00 | 0.38 | 16.0 | 295 |
| 12 | 10.63 | 12.00 | 27.5 | 1.28 | 17.00 | 12 | 1.00 | 0.41 | 19.0 | 370 |

E - BOLT CIRCLE DIA. END FLANGE
 F - NUMBER OF BOLTS REQ'D EACH END FLANGE
 G - BOLT HOLE DIAMETER FOR END FLANGE
 END FLANGES CONFORM TO ANSI B16.1

M&H VALVE COMPANY
 ANNISTON, ALABAMA
 A DIVISION OF MCWANE INC.

DWN: TRIJ
 DATE: 7/1/05
 DWG. NO.
 K506-J

4" THRU 12"
 KENFLEX RESILIENT HINGED
 CHECK VALVE WITH BACKFLOW JACK
 STYLE 506-J