

# M&H Valve Butterfly Valves Operators

Section

Page

**Buried Operator/ Hand Wheel Operator**

**2**

(Model 150, 250, 510, 1250, 2200)

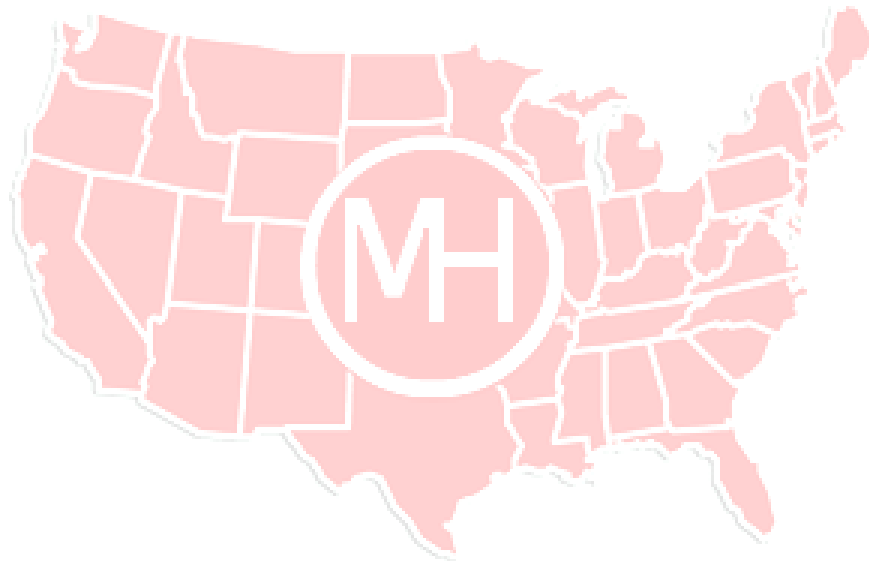
**Buried Operator/ Hand Wheel Operator**

**3**

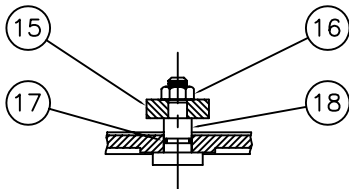
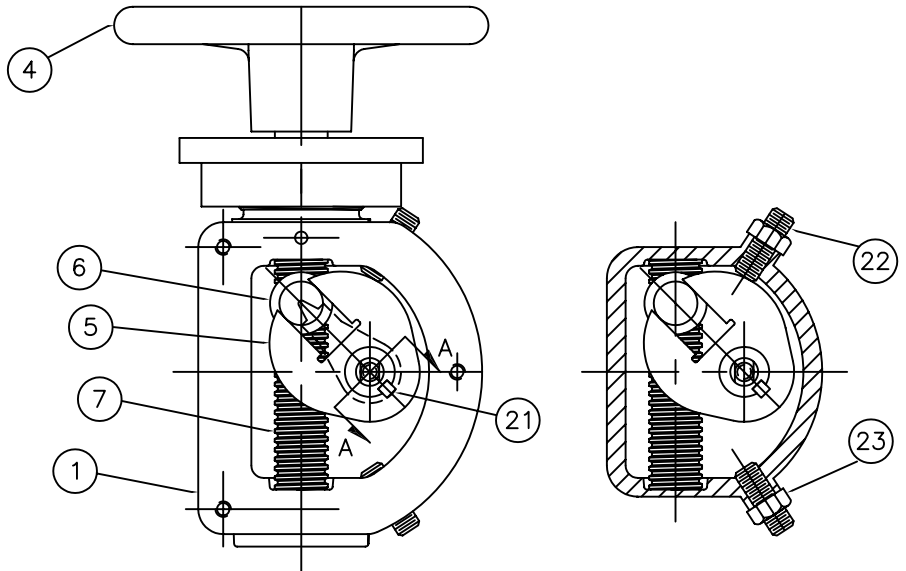
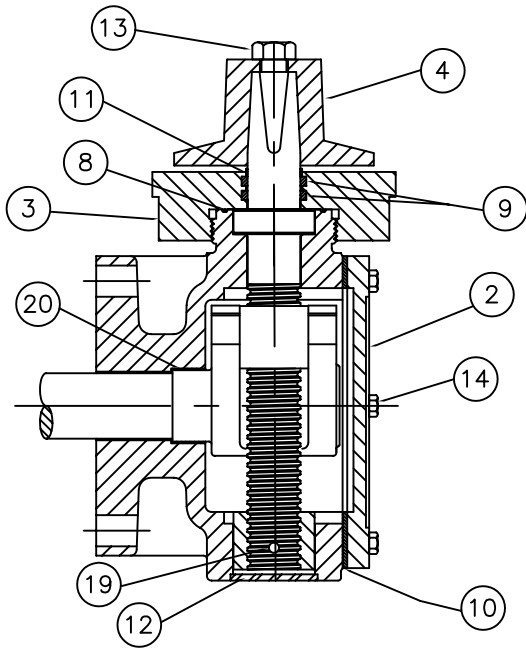
(Model 4350)

**Lever Operator**

**4**



***\*\*\*Please check our website [www.mh-valve](http://www.mh-valve) for any product updates and/or changes\*\*\****



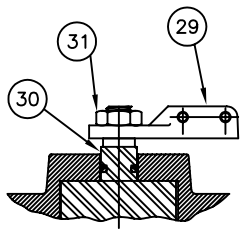
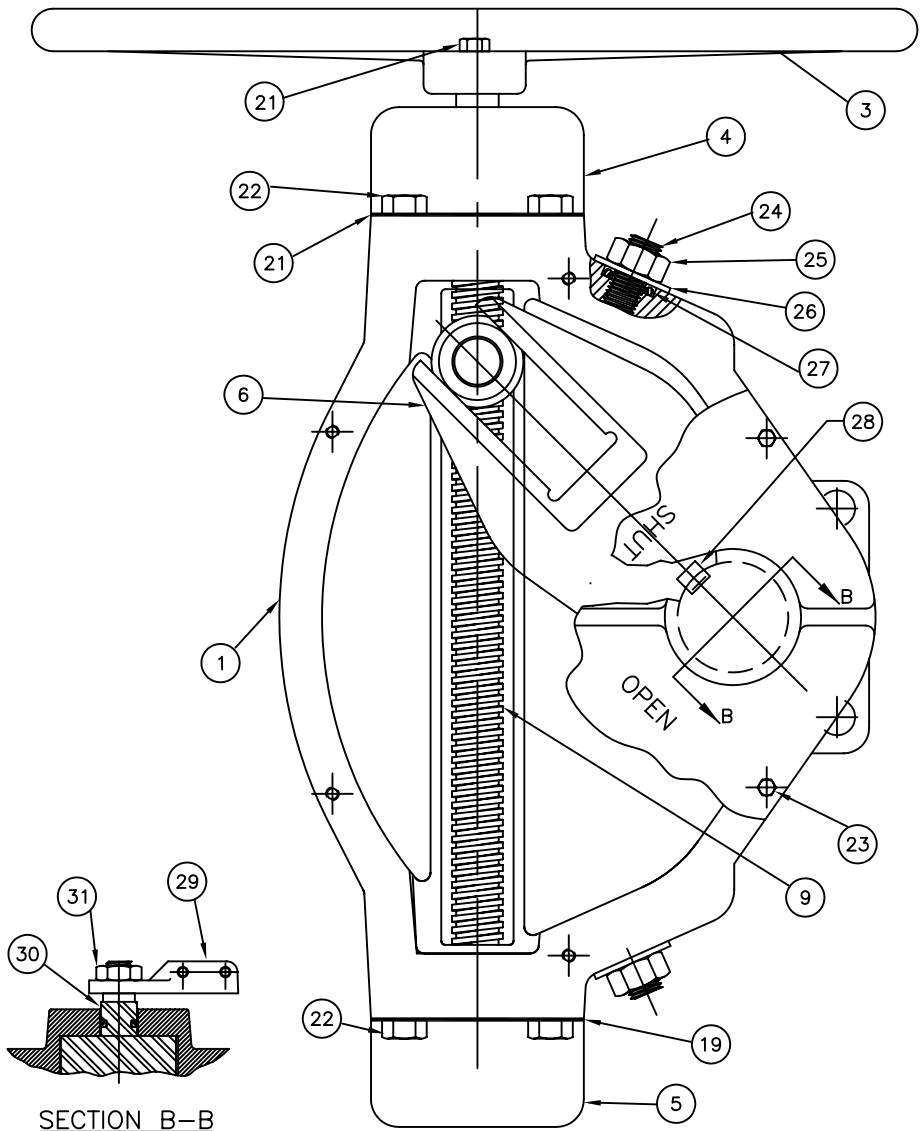
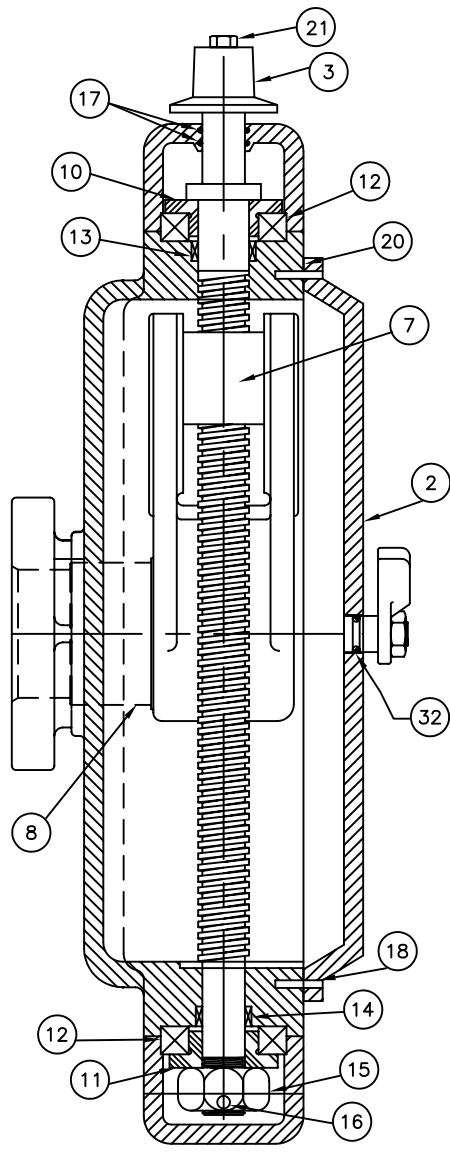
SECTION A-A FOR  
HANDWHEEL OPERATORS  
POSITION INDICATOR

ITEM #	DESCRIPTION	MATERIAL
1	HOUSING OPERATOR	CAST IRON, A-126, CLASS B
2	COVER, HOUSING	CAST IRON, A-126, CLASS B
3	CAP, THRUST	CAST IRON, A-126, CLASS B
4	AS REQUIRED	CAST IRON, A-126, CLASS B
5	LEVER	DUCTILE IRON, A-536, GRADE 80-45-06
6	CROSSHEAD	DUCTILE IRON, A-536, GRADE 65-55-12
7	SHAFT, INPUT	C.D. STEEL, 12L14
8	"O" RING	N.B.R.
9	"O" RING	N.B.R.
10	GASKET, COVER	CORK-NEOPRENE
11	SHEILD, SHAFT	REINFORCED TEFLON
12	PLUG, EXPANSION	BRASS COMM.
13	BOLT, HEX HEAD (AWWA NUT)	STAINLESS STEEL, 316
14	BOLT, HEX HEAD (COVER)	STAINLESS STEEL, 316
15	INDICATOR	CAST IRON, A-126, CLASS B
16	NUT, HEX	STEEL, COMM.
17	"O" RING	N.B.R.
18	PIN, INDICATOR	STEEL, COMM.
19	PIN, INPUT SHAFT	STEEL, COMM.
20	BUSHING	REINFORCED TEFLON
21	KEY	STEEL, COMM.
22	SET SCREW, LEVER	STAINLESS STEEL, 18-8
23	NUT, JAM	STAINLESS STEEL, 18-8

M&H VALVE COMPANY  
ANNISTON, ALABAMA  
A DIVISION OF MCWANE INC.

DWN: TRIJ  
DATE: 7/1/05  
DWG. NO.  
BFV-OP-1

1250 / 2200  
MANUAL OPERATOR  
SUB-ASSEMBLY / MATERIAL LIST



SECTION B-B

ITEM NO.	DESCRIPTION	MATERIAL	NO. REQ.
1	OPERATOR HOUSING	CAST IRON, ASTM A-126 CL. B	1
2	HOUSING COVER	CAST IRON, ASTM A-126 CL. B	1
3	OPERATOR NUT OR HANDWHEEL	CAST IRON, ASTM A-126 CL. B	1
4	END CAP (INPUT)	CAST IRON, ASTM A-126 CL. B	1
5	END CAP (LOCK NUT)	CAST IRON, ASTM A-126 CL. B	1
6	LEVER	DUCTILE IRON, ASTM A-536, GR. 65-45-12	1
7	CROSSHEAD	CDS 12L14	1
8	BUSHING	NYLATRON GS	1
9	INPUT SHAFT	CDS AISI C1141 LEADED	1
10	BEARING RETAINER	CDS AISI C1117 LEADED	1
11	BEARING RETAINER	CDS AISI C1117 LEADED	1
12	BALL THRUST BEARING	COMMERCIAL STEEL	2
13	SLEEVE BEARING	OILITE BRONZE	1
14	SLEEVE BEARING	OILITE BRONZE	1
15	SLOTTED NUT	COMMERCIAL STEEL	1
16	LOCK PIN	COMMERCIAL STEEL	1
17	END CAP SEAL	BUNA "N"	2

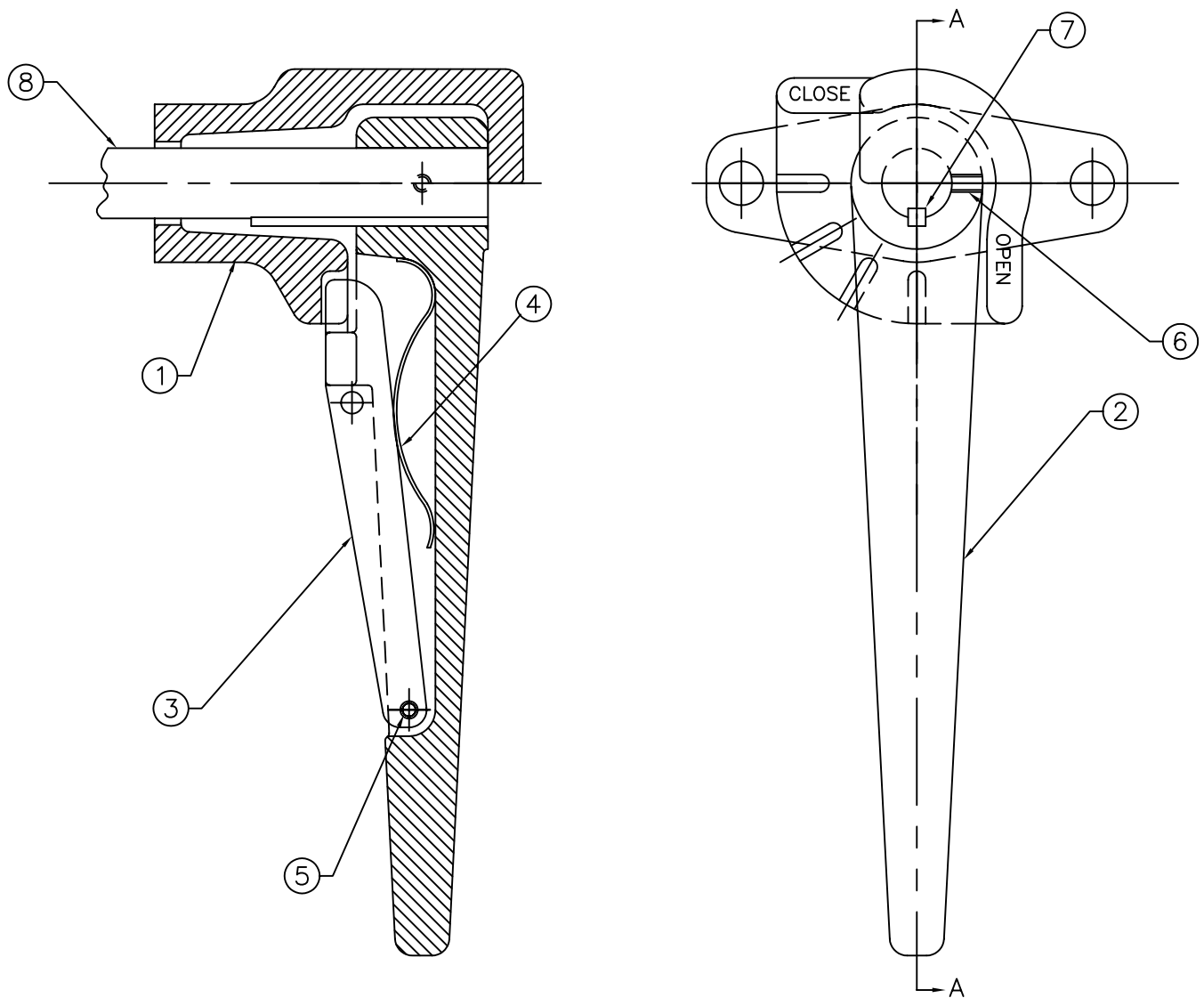
ITEM NO.	DESCRIPTION	MATERIAL	NO. REQ.
18	DOWEL PIN	STEEL, COMMERCIAL	2
19	END CAP GASKET	PERMATEX FORM-A GASKET NO. 2	2
20	COVER GASKET	PERMATEX FORM-A GASKET NO. 2	1
21	HEX HEAD CAP SCREW	COMMERCIAL STEEL	1
22	HEX HEAD CAP SCREW	COMMERCIAL STEEL	8
23	HEX HEAD CAP SCREW	COMMERCIAL STEEL	6
24	SETScrew (LEVER ADJUSTMENT)	SS 18-8	1
25	HEX JAM NUT (LEVER ADJUSTMENT)	COM. STEEL-ASTM A563 GRADE A, ZINC PLATED-ASTM B-633	1
26	WASHER (LEVER ADJUSTMENT)	COM. STEEL-ASTM A563 GRADE A, ZINC PLATED-ASTM B-633	1
27	O-RING (LEVER ADJUSTMENT)	BUNA "N"	1
28	KEY	COMMERCIAL STEEL	1
*29	INDICATOR	CAST IRON A-126 CL. B	1
*30	INDICATOR PIN	COMMERCIAL STEEL	1
*31	NUT, HEX (INDICATOR PIN)	COMMERCIAL STEEL	1
*32	O-RING (INDICATOR PIN)	BUNA "N"	1

\* PARTS FOR HANDWHEEL ACTUATOR WITH POSITION INDICATOR

M&H VALVE COMPANY  
ANNISTON, ALABAMA  
A DIVISION OF MCWANE INC.

DWN: TRIJ  
DATE: 7/1/05  
DWG. NO.  
BFV-OP-2

SUB-ASSEMBLY / MATERIAL LIST  
M&H 4350 OPERATOR



ITEM NO.	DESCRIPTION	MATERIAL
1	BRACKET	CAST IRON; A-126, CL. B
2	LEVER	CAST IRON; A-126, CL. B
3	LATCH	CAST IRON; A-126, CL. B
4	SPRING	SPRING STEEL, CADMIUM PLATED
5	SPRIING PIN	STEEL; CADMIUM PLATED
6	SCREW, SOCKET SET	ALLOY STEEL
7	KEY	C-1018 C.F.
8	SHAFT	STAINLESS STEEL, TYPE 304

M&H VALVE COMPANY  
ANNISTON, ALABAMA  
A DIVISION OF MCWANE INC.

DWN: TRIJ  
DATE: 7/1/05  
DWG. NO.  
BFV-OP-3

4"-6"-8"  
LEVER OPERATOR  
SUB-ASSEMBLY / MATERIAL LIST