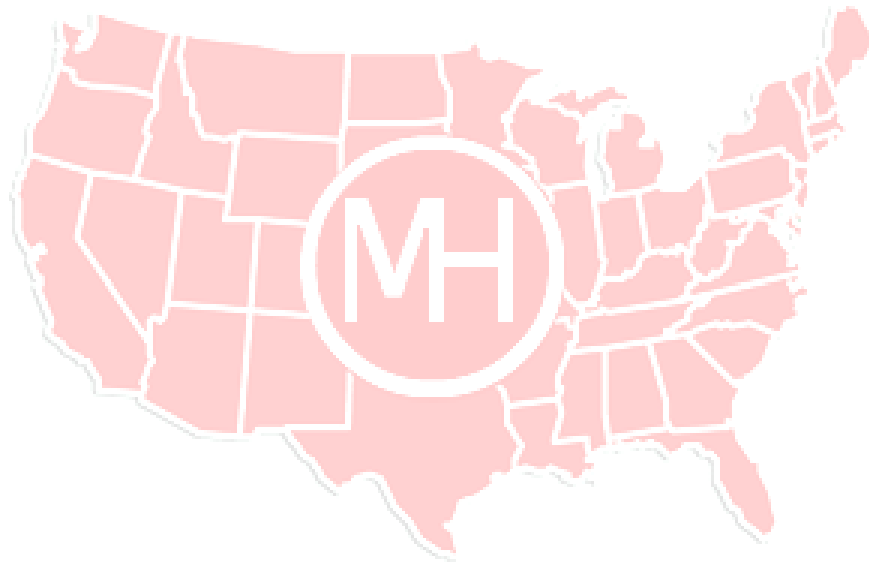


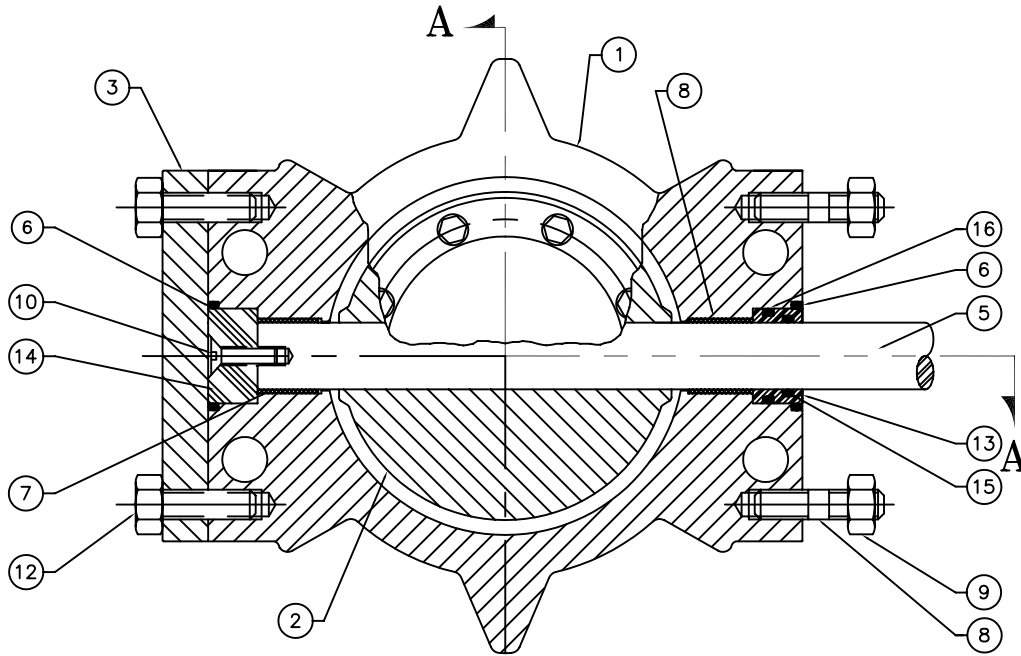
# M&H Valve

## Class 150 Wafer End Butterfly Valves

<u>Section</u>		<u>Page</u>
4-12"	Style 4500	2
14-20"	Style 4500	3
4-20"	Style 4500 (Buried Operator)	4
4-20"	Style 4500 (Hand Wheel Operator)	5
4, 6, 8"	Style 4500 (Lever Operator)	6

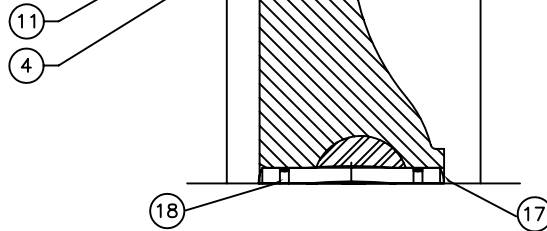


***\*\*\*Please check our website [www.mh-valve](http://www.mh-valve) for any product updates and/or changes\*\*\****



304 STAINLESS STEEL  
BODY SEAT

304 STAINLESS STEEL  
CLAMP RING VULCANIZED  
TO SEAT



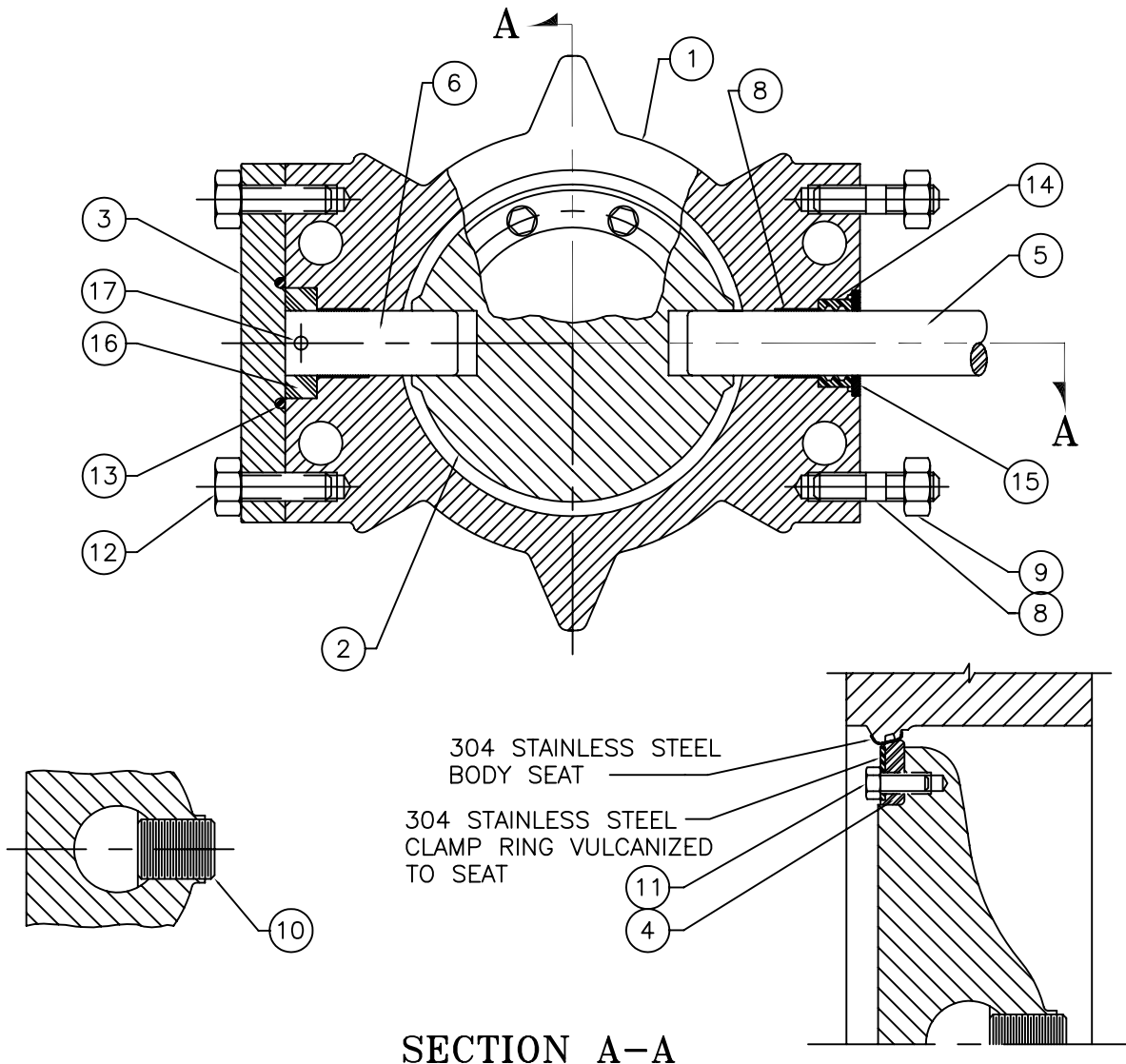
**SECTION A-A**

ITEM #	DESCRIPTION	MATERIAL
1	BODY, VALVE	CAST IRON, A-126, CLASS B WITH 304 STAINLESS STEEL SEAT
2	VANE	CAST IRON, A-48, CLASS 40
3	COVER, END	CAST IRON, A-126, CLASS B
4	SEAT RING, VANE	NATURAL RUBBER WITH INSERT
5	SHAFT	304 STAINLESS STEEL, ASTM A-276
6	O-RING, BODY	BUNA "N"
7	BEARING, BODY	EPOXY FIBERGLASS WITH TEFLON LINER
8	STUD	STEEL, ASTM A-307, ELCTRO ZINC PLATED
9	NUT, HEAVY HEX	STEEL, ASTM A-563, GRADE A, ELCTRO ZINC PLATED
10	SOCKET SCREW, FLAT HEAD HEX	STAINLESS STEEL, 18-8
11	CAPSCREW, HEX	STAINLESS STEEL, 18-8 WITH NYLOK INSERT
12	CAPSCREW, HEX	STEEL, ASTM A-307, ELCTRO ZINC PLATED
13	CARTRIDGE SEAL	UHMW (POLYEHTYLENE)
14	THRUST DISK	ACETEL
15	"O" RING CARTRIDGE, INSIDE	BUNA "N"
16	"O" RING CARTRIDGE, OUTSIDE	BUNA "N"
17	GROOVED PIN	393 STAINLESS STEEL
18	O-RING, GROOVED PIN	BUNA-N

M&H VALVE COMPANY  
ANNISTON, ALABAMA  
A DIVISION OF MCWANE INC.

DWN: TRIJ  
DATE: 7/1/05  
DWG. NO.  
BW-15-K1

4" THRU 12" STYLE 4500  
CLASS 150 BUTTERFLY VALVE  
SUB-ASSEMBLY / MATERIAL LIST  
WAFER ENDS



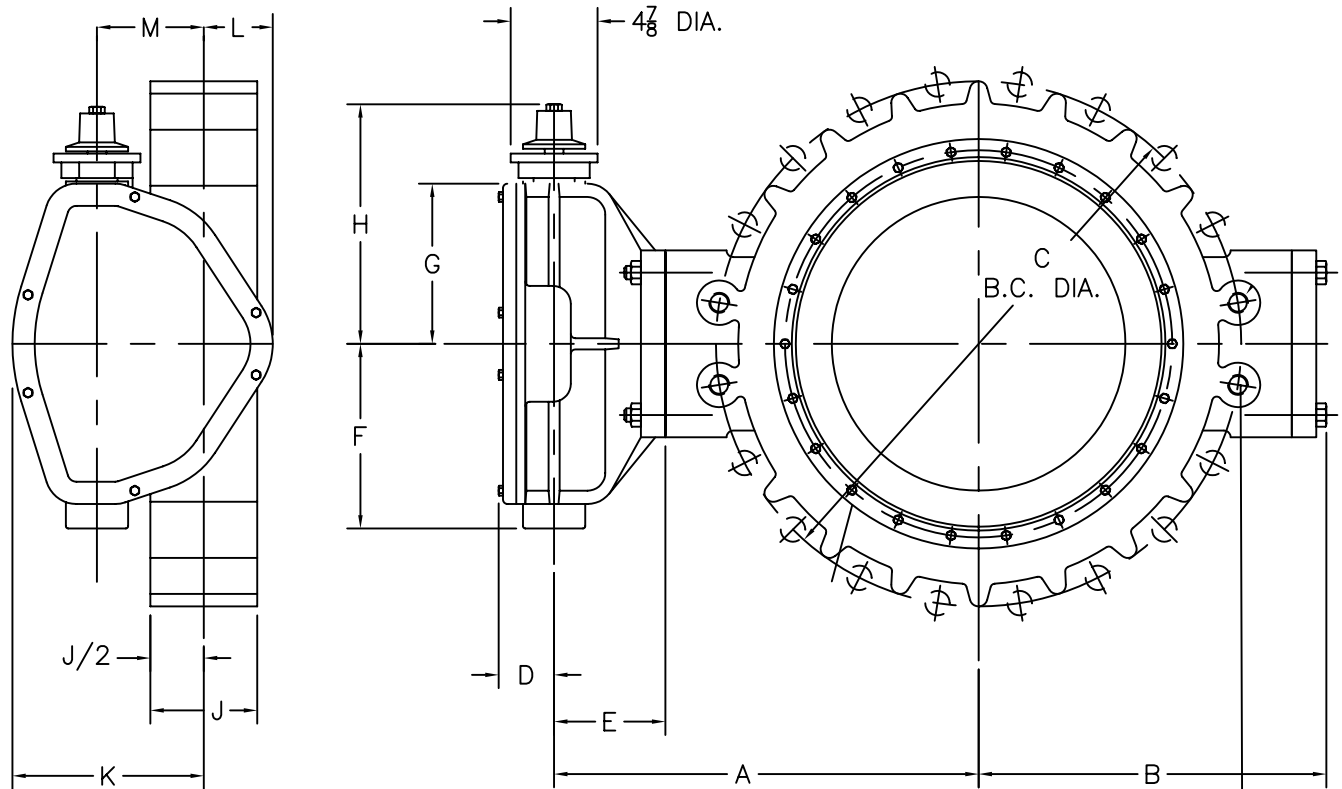
**SECTION A-A**

ITEM #	DESCRIPTION	MATERIAL
1	BODY, VALVE	CAST IRON, A-126, CLASS B WITH 304 STAINLESS STEEL SEAT
2	VANE	CAST IRON, A-48, CLASS 40
3	COVER, END	CAST IRON, A-126, CLASS B
4	SEAT RING, VANE	BUNA "S" WITH 304 STAINLESS STEEL INSERT
5	SHAFT, OPERATOR	304 STAINLESS STEEL, ASTM A-276
6	SHAFT, THRUST	304 STAINLESS STEEL, ASTM A-276
7	BUSHING	REINFORCED TEFLON
8	STUD	STEEL, ASTM A-307, ELCTRO ZINC PLATED
9	NUT, HEX	STEEL, ASTM A-307, GRADE A, ELCTRO ZINC PLATED
10	TORQUE PLUG, SHAFT	304 STAINLESS STEEL, ASTM A-276
11	CAPSCREW, HEX	STAINLESS STEEL, 18-8 WITH NYLOK INSERT
12	BOLT, HEX HEAD	STEEL, ASTM A-307, GRADE B, ELCTRO ZINC PLATED
13	O-RING, END COVER	BUNA "N"
14	SHAFT SEAL	BUNA "S"
15	SEAL RING	STEEL, C-1018
16	THRUST COLLAR	BEARING BRONZE, ASTM B-144, ALLOY 3B
17	ROLL PIN	STAINLESS STEEL, A.I.S.I. 420

M&H VALVE COMPANY  
ANNISTON, ALABAMA  
A DIVISION OF MCWANE INC.

DWN: TRIJ  
DATE: 7/1/05  
DWG. NO.  
BW-15-K2

14" THRU 20" STYLE 4500  
CLASS 150 BUTTERFLY VALVE  
SUB-ASSEMBLY / MATERIAL LIST  
WAFER ENDS



FOR INSTALLATION BETWEEN  
125# OR 150# ASA FLANGES

FOUR HOLES, "AB" DIAMETER  
(18" & 20" ONLY, THESE FOUR  
HOLES ARE TAPPED 1 1/8"-7NC X  
"AD" DEEP EACH FACE)

VALVE SIZE	OPERATOR MODEL	D	E	F	G	H	K	L	M	N
4"	65	2	3 9/16	3 7/16	3	7 3/4	3 7/16	2 1/4	1 3/8	16 1/2
6"	150	2	3 9/16	3 7/16	3	7 3/4	3 7/16	2 1/4	1 3/8	16 1/2
8"	250	2 1/16	3 11/16	4 1/16	3 7/8	8 3/4	4 1/2	2 3/8	2	24
10" & 12"	510	2 1/4	4 1/2	5 7/16	5 3/16	10 1/16	6 1/8	2 3/4	3	36
14", 16", 18" & 20"	1250	3 3/16	5 3/4	8 3/8	7	12 5/16	7 7/8	3 1/4	4	48

VALVE SIZE	A	B	C	J	P	Q	AB	AD	WEIGHT
4"	4	5 7/16	7 1/2	2 1/2	8	5/8	-	-	60
6"	5	6 1/2	9 1/2	2 1/2	8	3/4	-	-	70
8"	6	7 9/16	11 3/4	2 3/4	8	3/4	-	-	100
10"	7 3/4	9 5/8	14 1/4	3 1/4	12	7/8	-	-	155
12"	9 1/2	11 3/8	17	3 1/4	12	7/8	-	-	190
14"	10 7/16	12 15/16	18 3/4	4 1/2	12	1	-	-	405
16"	12 3/16	14 11/16	21 1/4	4 1/2	16	1	-	-	465
18"	13 5/16	15 13/16	22 3/4	5 3/4	16	1 1/8	1 1/8-7	1 3/8	595
20"	14 7/8	17 3/8	25	5 3/4	20	1 1/8	1 1/8-7	1 1/4	675

NOTE 1: FLOW MAY BE IN EITHER DIRECTION

NOTE 2: VALVE SHAFT WILL MEET OR EXCEED REQUIREMENTS OF SHAFT TABLE PER AWWA STANDARD C-504 FOR APPLICABLE CLASS.

NOTE 3: REFERENCE AWWA C-504 FLANGES & DRILLING (A.N.S.I. 125)

NOTE 4: "N" = NUMBER OF TURNS TO CLOSE

NOTE 5: "P" = NUMBER OF BOLTS ON EACH FLANGE

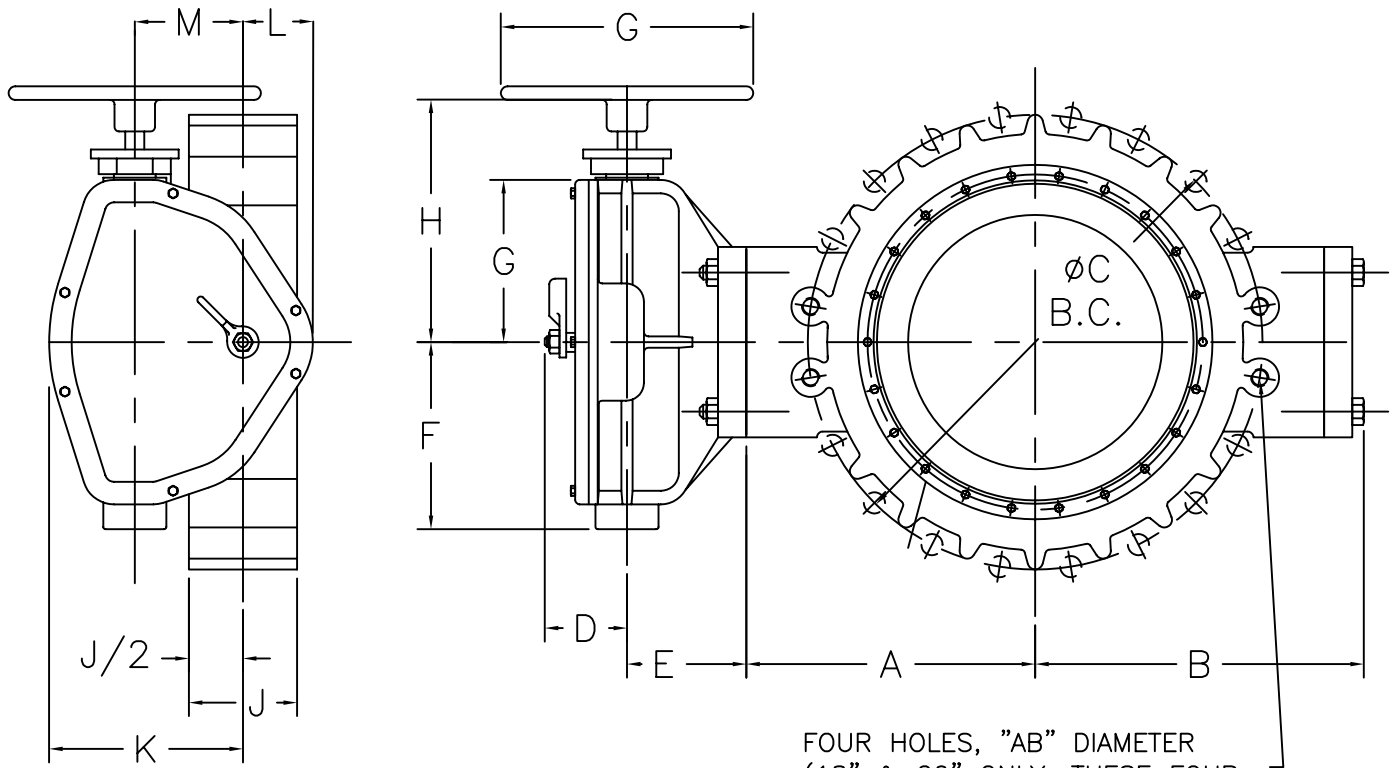
NOTE 6: "Q" = DIAMETER OF BOLTS

NOTE 7: OPERATED BY 2" AWWA OPERATING / WRENCH NUT

M&H VALVE COMPANY  
ANNISTON, ALABAMA  
A DIVISION OF MCWANE INC.

DWN: TRIJ  
DATE: 7/1/05  
DWG. NO.  
BW-15-K3

4" THRU 20" STYLE 4500  
CLASS 150 BUTTERFLY VALVE  
BURIED OPERATOR  
WAFER ENDS



FOR INSTALLATION BETWEEN  
125# OR 150# ASA FLANGES

FOUR HOLES, "AB" DIAMETER  
(18" & 20" ONLY, THESE FOUR  
HOLES ARE TAPPED 1.125-7NC X  
"AD" DEEP EACH FACE)

VALVE SIZE	OPERATOR MODEL	D	E	F	G	H	K	L	M	N
4"	65	2 15/16	3 9/16	3 7/16	7 1/2	7 3/4	3 7/16	2 1/4	1 3/8	16 1/2
6"	150	2 15/16	3 9/16	3 7/16	7 1/2	7 3/4	3 7/16	2 1/4	1 3/8	16 1/2
8"	250	3	3 11/16	4 1/16	14	8 7/8	4 1/2	2 3/8	2	24
10" & 12"	510	3 3/16	4 1/2	5 7/16	14	10 3/16	6 1/8	2 3/4	3	36
14",16",18" & 20"	1250	4 1/16	5 3/4	8 3/8	18	12 1/2	7 7/8	3 1/4	4	48

VALVE SIZE	A	B	C	J	P	Q	AB	AD	WEIGHT
4"	4	5 7/16	7 1/2	2 1/2	8	5/8	-	-	60
6"	5	6 1/2	9 1/2	2 1/2	8	3/4	-	-	70
8"	6	7 9/16	11 3/4	2 3/4	8	3/4	-	-	100
10"	7 3/4	9 5/8	14 1/4	3 1/4	12	7/8	-	-	155
12"	9 1/2	11 3/8	17	3 1/4	12	7/8	-	-	190
14"	10 7/16	12 15/16	18 3/4	4 1/2	12	1	-	-	405
16"	12 3/16	14 11/16	21 1/4	4 1/2	16	1	-	-	465
18"	13 5/16	15 13/16	22 3/4	5 3/4	16	1 1/8	1 1/8-7	1 3/8	595
20"	14 7/8	17 3/8	25	5 3/4	20	1 1/8	1 1/8-7	1 1/4	675

NOTE 1: FLOW MAY BE IN EITHER DIRECTION

NOTE 2: VALVE SHAFT WILL MEET OR EXCEED REQUIREMENTS OF SHAFT TABLE PER AWWA STANDARD C-504 FOR APPLICABLE CLASS.

NOTE 3: REFERENCE AWWA C-504 FLANGES & DRILLING (A.N.S.I. 125)

NOTE 4: "N" = NUMBER OF TURNS TO CLOSE

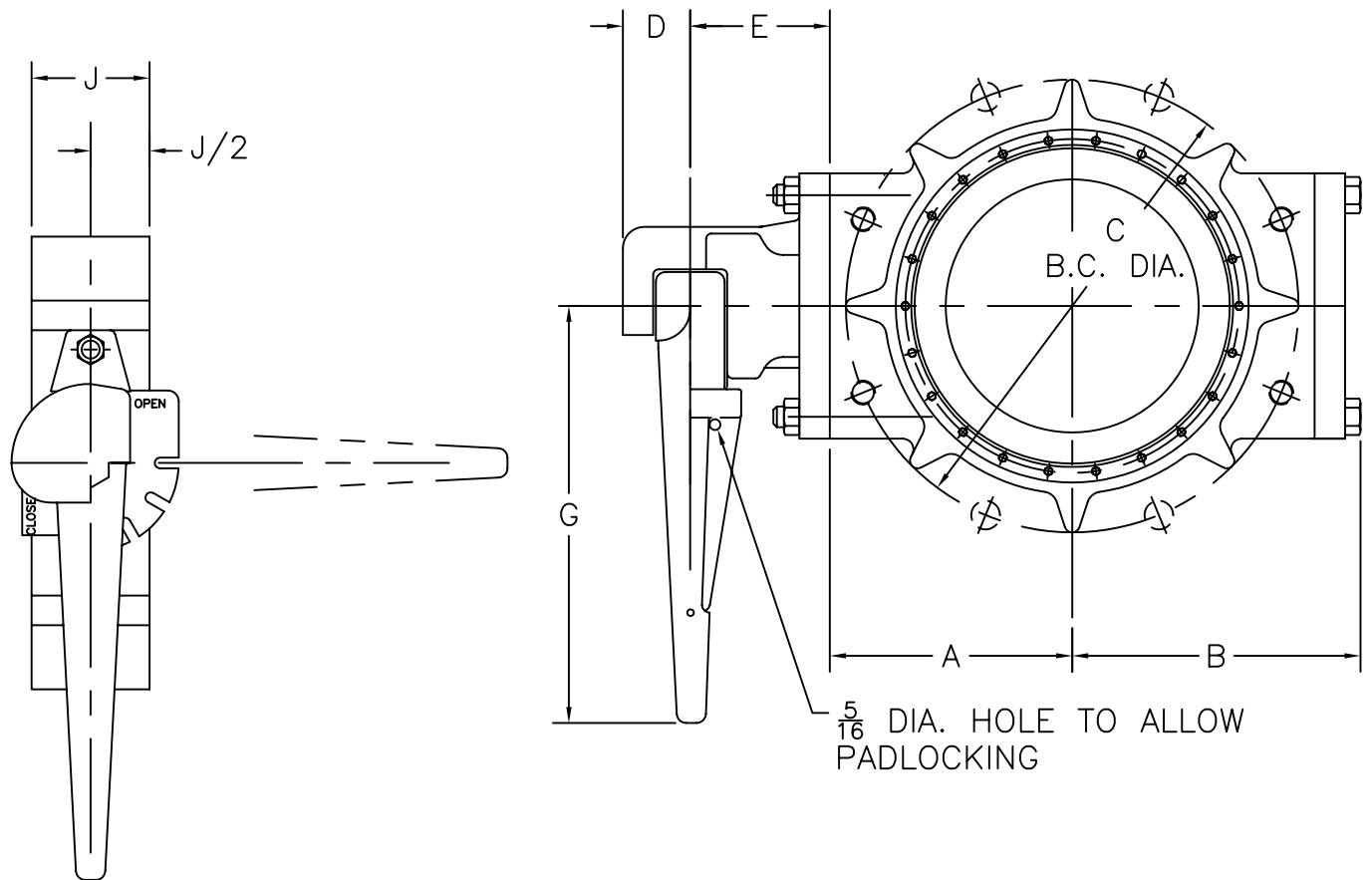
NOTE 5: "P" = NUMBER OF BOLTS ON EACH FLANGE

NOTE 6: "Q" = DIAMETER OF BOLTS

M&H VALVE COMPANY  
ANNISTON, ALABAMA  
A DIVISION OF MCWANE INC.

DWN: TRIJ  
DATE: 7/1/05  
DWG. NO.  
BW-15-K4

4" THRU 20" STYLE 4500  
CLASS 150 BUTTERFLY VALVE  
HANDWHEEL OPERATOR  
WITH POSITION INDICATOR  
WAFER ENDS



VALVE SIZE	OPERATOR MODEL	D	E	G
4"	150	1 1/2	3 13/16	11
6"	150	1 1/2	3 13/16	11
8"	150	1 1/2	3 13/16	11

VALVE SIZE	A	B	C	D	E	G	J	P	Q	WEIGHT
4"	4	5 7/16	7 1/2	1 1/2	3 13/16	11	2 1/2	8	5/8	40
6"	5	6 1/2	9 1/2	1 1/2	3 13/16	11	2 1/2	8	3/4	55
8"	6	7 9/16	11 3/4	1 1/2	4 1/16	11	2 3/4	8	3/4	65

NOTE 1: FLOW MAY BE IN EITHER DIRECTION

NOTE 2: VALVE SHAFT WILL MEET OR EXCEED REQUIREMENTS OF SHAFT TABLE PER AWWA STANDARD C-504 FOR APPLICABLE CLASS.

NOTE 3: REFERENCE AWWA C-504 FLANGES & DRILLING (A.N.S.I. 125)

NOTE 4: "P" = NUMBER OF BOLTS ON EACH FLANGE

NOTE 5: "Q" = DIAMETER OF BOLTS

M&H VALVE COMPANY  
ANNISTON, ALABAMA  
A DIVISION OF MCWANE INC.

DWN: TRIJ  
DATE: 7/1/05  
DWG. NO.  
BW-15-K5

4" THRU 8" STYLE 4500  
CLASS 150 BUTTERFLY VALVE  
LEVER OPERATOR  
WAFER ENDS