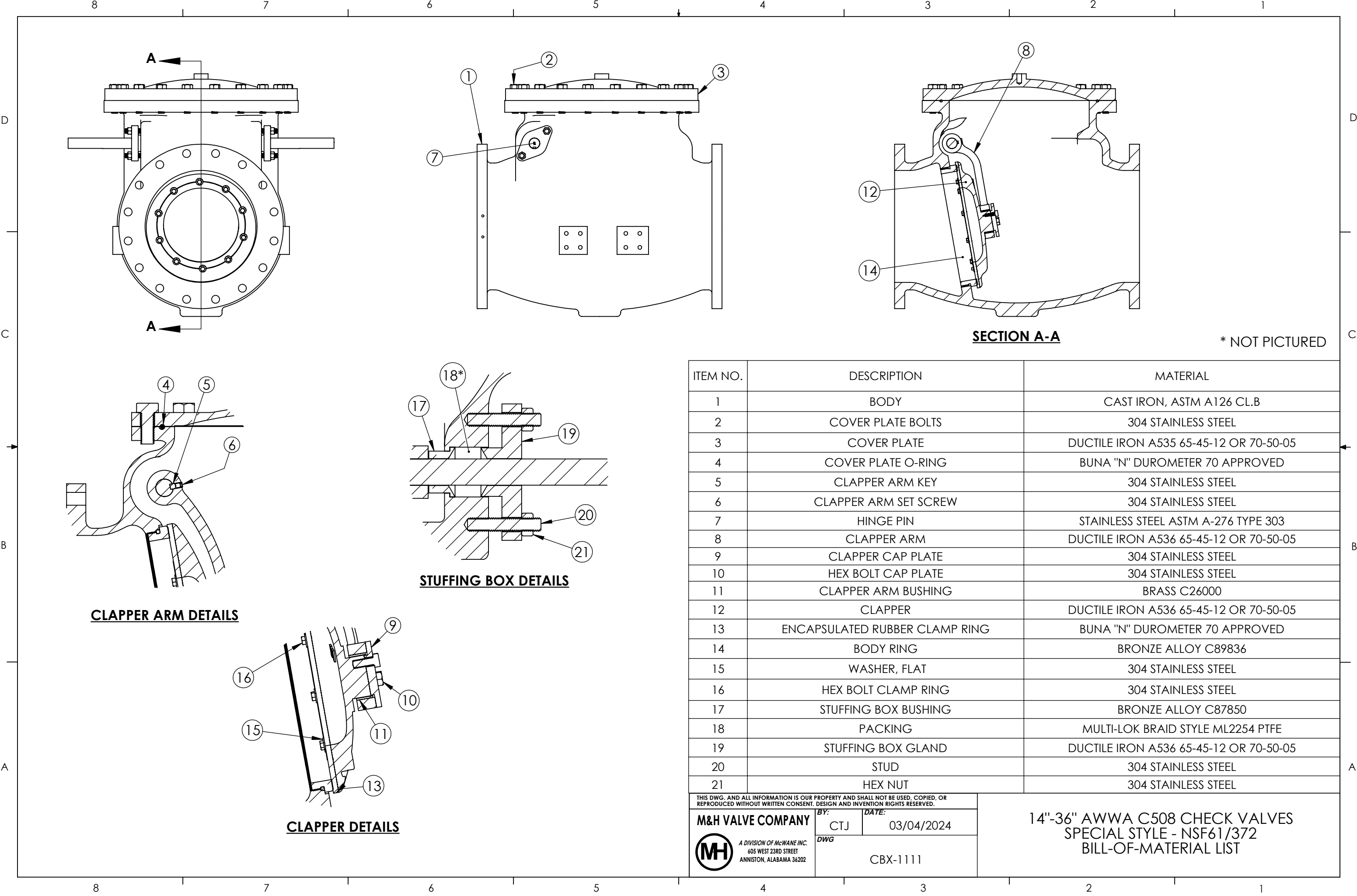


CDX30-L23R23

30" AWWA C508 CHECK VALVE
SPECIAL STYLE - W/ DUAL WEIGHTS & AIR CUSHIONS



SECTION A-A

* NOT PICTURED

ITEM NO.	DESCRIPTION	MATERIAL
1	BODY	CAST IRON, ASTM A126 CL.B
2	COVER PLATE BOLTS	304 STAINLESS STEEL
3	COVER PLATE	DUCTILE IRON A535 65-45-12 OR 70-50-05
4	COVER PLATE O-RING	BUNA "N" DUROMETER 70 APPROVED
5	CLAPPER ARM KEY	304 STAINLESS STEEL
6	CLAPPER ARM SET SCREW	304 STAINLESS STEEL
7	HINGE PIN	STAINLESS STEEL ASTM A-276 TYPE 303
8	CLAPPER ARM	DUCTILE IRON A536 65-45-12 OR 70-50-05
9	CLAPPER CAP PLATE	304 STAINLESS STEEL
10	HEX BOLT CAP PLATE	304 STAINLESS STEEL
11	CLAPPER ARM BUSHING	BRASS C26000
12	CLAPPER	DUCTILE IRON A536 65-45-12 OR 70-50-05
13	ENCAPSULATED RUBBER CLAMP RING	BUNA "N" DUROMETER 70 APPROVED
14	BODY RING	BRONZE ALLOY C89836
15	WASHER, FLAT	304 STAINLESS STEEL
16	HEX BOLT CLAMP RING	304 STAINLESS STEEL
17	STUFFING BOX BUSHING	BRONZE ALLOY C87850
18	PACKING	MULTI-LOK BRAID STYLE ML2254 PTFE
19	STUFFING BOX GLAND	DUCTILE IRON A536 65-45-12 OR 70-50-05
20	STUD	304 STAINLESS STEEL
21	HEX NUT	304 STAINLESS STEEL

THIS DWG. AND ALL INFORMATION IS OUR PROPERTY AND SHALL NOT BE USED, COPIED, OR REPRODUCED WITHOUT WRITTEN CONSENT. DESIGN AND INVENTION RIGHTS RESERVED.

M&H VALVE COMPANY

A DIVISION OF MCWANE INC.
605 WEST 23RD STREET
ANNISTON, ALABAMA 36202

BY:

CTJ

DATE:

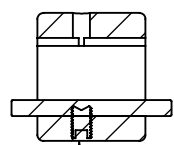
03/04/2024

DWG

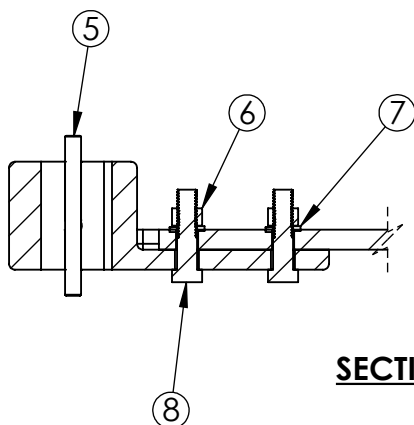
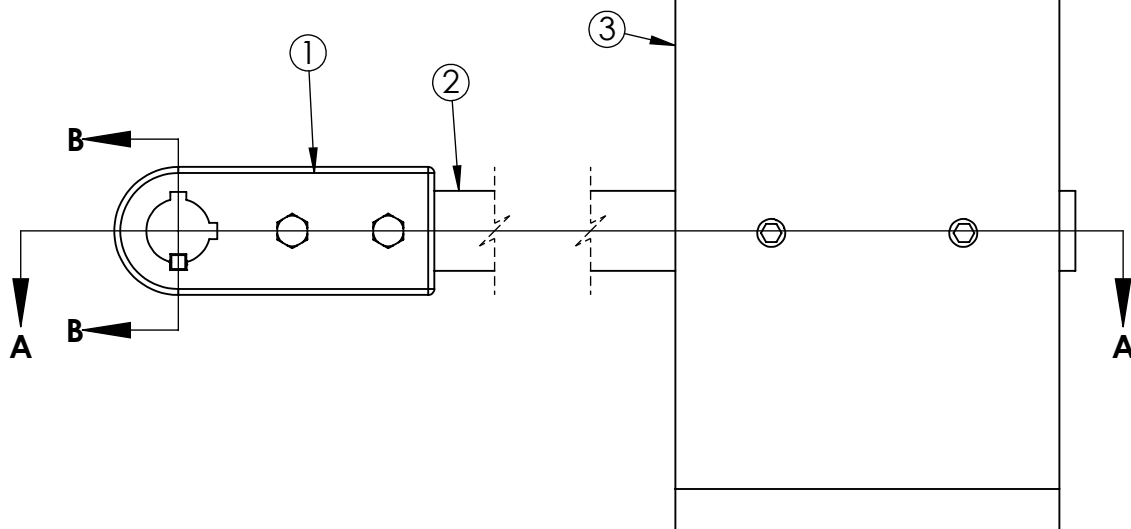
CBX-1111

14"-36" AWWA C508 CHECK VALVES
SPECIAL STYLE - NSF61/372
BILL-OF-MATERIAL LIST

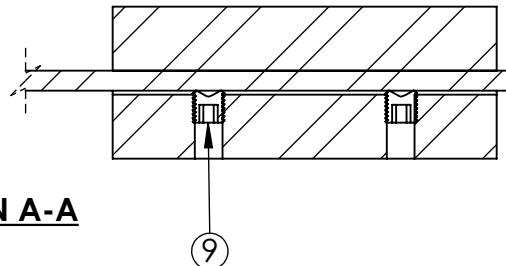
SECTION B-B



4



SECTION A-A



#	DESCRIPTION	MATERIAL
1	ARM	DUCTILE IRON, ASTM A536
2	WEIGHT BAR	C1018
3	WEIGHT	STEEL
4	SET SCREW	304 STAINLESS STEEL
5	KEY	C1018
6	HEX NUT	304 STAINLESS STEEL
7	LOCK WASHER	304 STAINLESS STEEL
8	HEX HEAD BOLT	304 STAINLESS STEEL
9	TORQUE PLUG	304 STAINLESS STEEL

THIS DWG. AND ALL INFORMATION IS OUR PROPERTY AND SHALL NOT BE USED, COPIED, OR REPRODUCED WITHOUT WRITTEN CONSENT. DESIGN AND INVENTION RIGHTS RESERVED.

M&H VALVE COMPANY



A DIVISION OF McWANE INC.
605 WEST 23RD STREET
ANNISTON, ALABAMA 36202

BY:

CTJ

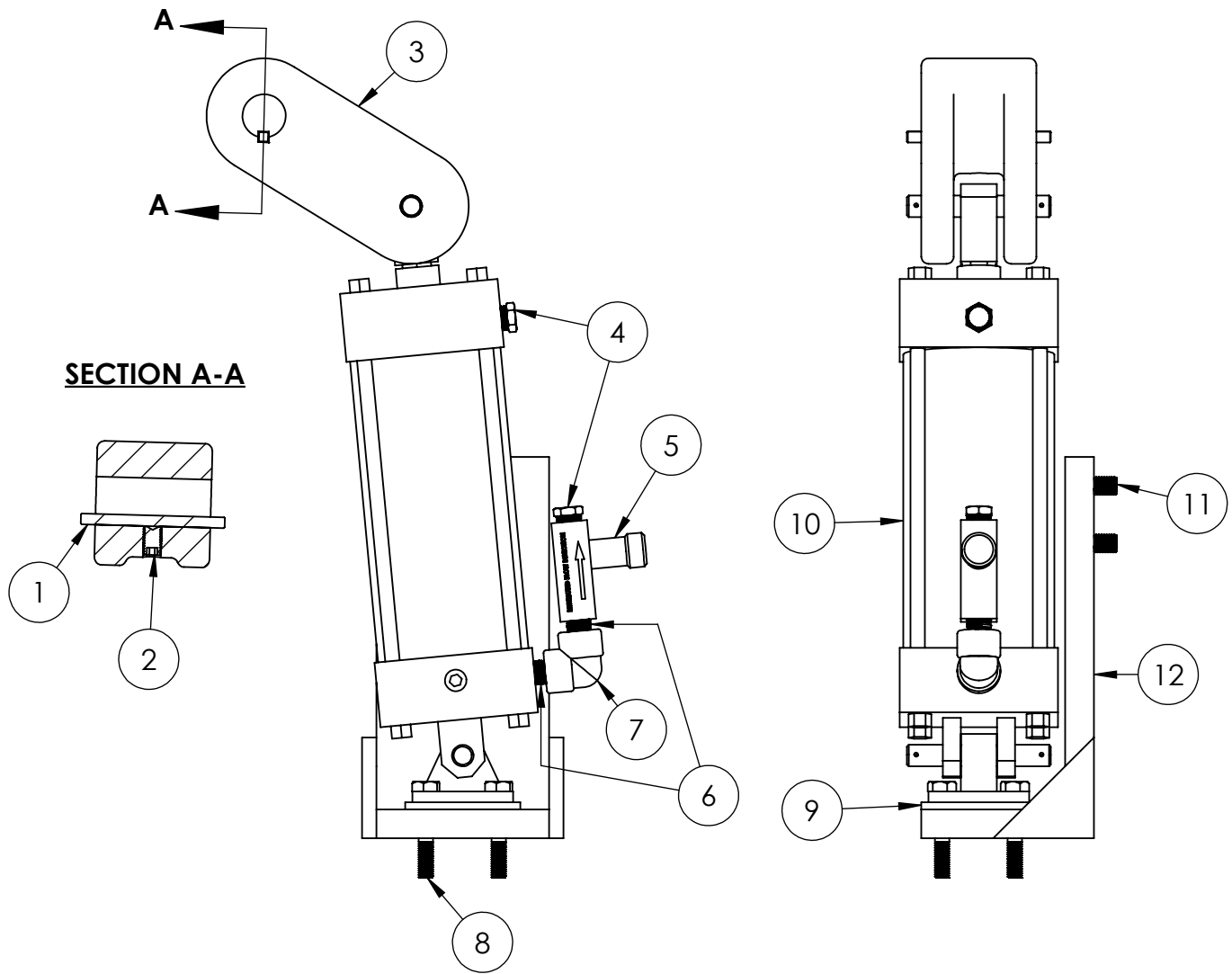
DATE:

03/01/2024

DWG

CAW11

WEIGHT ACCESSORY COMPONENTS
304 STAINLESS STEEL FASTENERS - STEEL KEY



#	DESCRIPTION	MATERIAL
1	SET SCREW	304 STAINLESS STEEL
2	KEY	C1018
3	CUSHION ARM	DUCTILE IRON, ASTM A536
4	BREATHER VENTS	BRASS
5	FLOW CONTROL VALVE	MISC
6	PIPE NIPPLE	STEEL
7	STREET ELBOW	STEEL
8	CUSHION MOUNTING BOLTS	304 STAINLESS STEEL
9	CUSHION ADJUSTMENT PLATES	STEEL
10	AIR CUSHION	MISC
11	BRACKET MOUNTING BOLTS	304 STAINLESS STEEL
12	CUSHION MOUNTING BRACKET	STEEL

THIS DWG. AND ALL INFORMATION IS OUR PROPERTY AND SHALL NOT BE USED, COPIED, OR REPRODUCED WITHOUT WRITTEN CONSENT. DESIGN AND INVENTION RIGHTS RESERVED.

M&H VALVE COMPANY



A DIVISION OF McWANE INC.
605 WEST 23RD STREET
ANNISTON, ALABAMA 36202

BY:

CTJ

DATE:

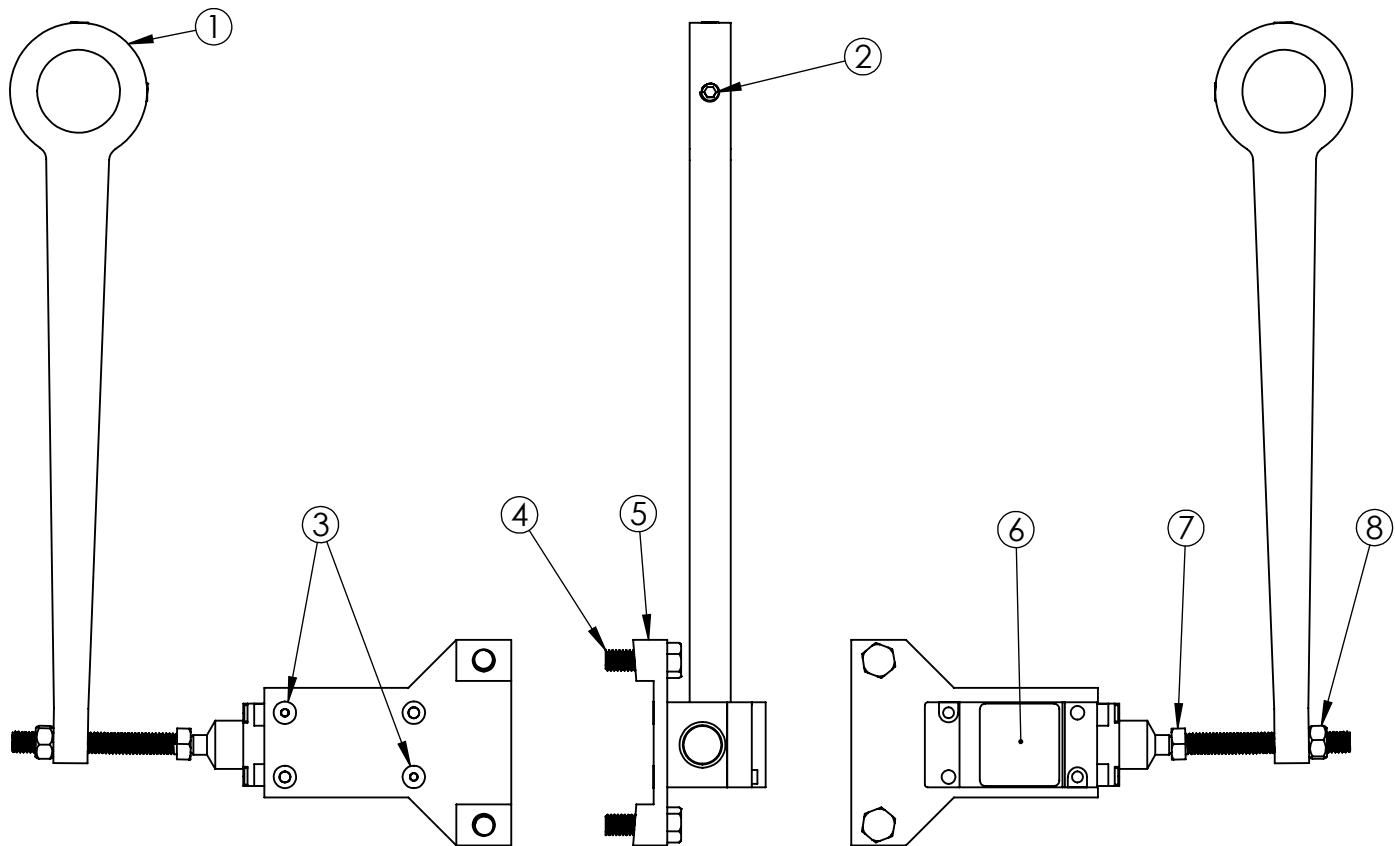
03/05/2024

DWG

CAA11

AIR CUSHION ACCESSORY COMPONENTS
304 STAINLESS STEEL FASTENERS - STEEL KEY

OPTIONAL BY REQUEST



#	DESCRIPTION	MATERIAL
1	TRIPPER ARM	STEEL
2	TRIPPER ARM SET SCREW	304 STAINLESS STEEL
3	LIMIT SWITCH MOUNTING BOLTS	304 STAINLESS STEEL
4	BRACKET MOUNTING BOLTS	304 STAINLESS STEEL
5	BRACKET	STEEL
6	LIMIT SWITCH	MISC
7	TRIPPER BOLT	304 STAINLESS STEEL
8	TRIPPER NUT	304 STAINLESS STEEL

THIS DWG. AND ALL INFORMATION IS OUR PROPERTY AND SHALL NOT BE USED, COPIED, OR REPRODUCED WITHOUT WRITTEN CONSENT. DESIGN AND INVENTION RIGHTS RESERVED.

M&H VALVE COMPANY



A DIVISION OF McWANE INC.
605 WEST 23RD STREET
ANNISTON, ALABAMA 36202

BY:

CTJ

DATE:

04/01/2024

DWG

CAL10

LIMIT SWITCH ACCESSORY COMPONENTS
304 STAINLESS STEEL FASTENERS